

# MYCBP antibody



Catalog Number: 112915

## Product name

MYCBP antibody

IHC: 1:20-1:200

IF: 1:20-1:200

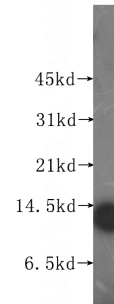
## Specificity

Human, Mouse, Rat; other species not tested.

## Validations

## Antibody description

MYCBP Rabbit Polyclonal antibody. Positive WB detected in human heart tissue, human kidney tissue, human lung tissue, human placenta tissue. Positive IF detected in HepG2 cells. Positive IHC detected in human pancreas cancer tissue. Observed molecular weight by Western-blot: 12kd



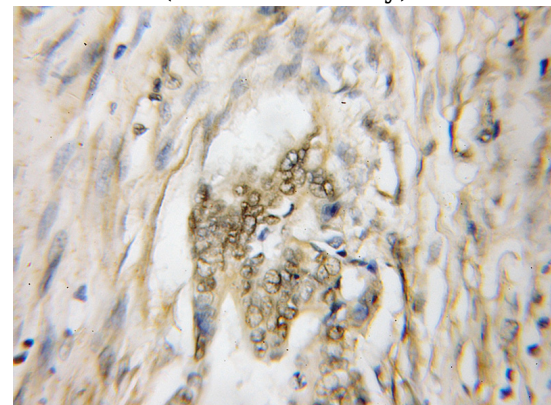
## Preparation

This antibody was obtained by immunization of MYCBP recombinant protein (Accession Number: NM\_012333). Purification method: Antigen affinity purified.

human heart tissue were subjected to SDS PAGE followed by western blot with Catalog No:112915(MYCBP antibody) at dilution of 1:500

## Formulation

PBS with 0.1% sodium azide and 50% glycerol pH 7.3.



## Storage

Store at -20°C. DO NOT ALIQUOT

## Clonality

Polyclonal

Immunohistochemical of paraffin-embedded human pancreas cancer using Catalog No:112915(MYCBP antibody) at dilution of 1:50 (under 10x lens)

## Ig Type

Rabbit IgG

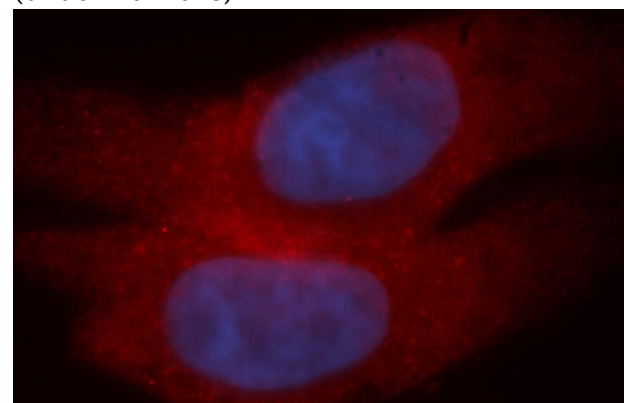
## Applications

ELISA, WB, IHC, IF

## Dilutions

Recommended Dilution:

WB: 1:500-1:5000



Immunofluorescent analysis of HepG2 cells, using

# MYCBP antibody



Catalog Number: 112915

---

MYCBP antibody Catalog No:112915 at 1:50  
dilution and Rhodamine-labeled goat anti-rabbit

IgG (red). Blue pseudocolor = DAPI (fluorescent  
DNA dye).