

# MVD antibody

Catalog Number: 112905

## Product name

MVD antibody

IHC: 1:20-1:200

IF: 1:50-1:500

## Specificity

Human, Mouse, Rat; other species not tested.

## Antibody description

MVD Rabbit Polyclonal antibody. Positive IHC detected in human lung cancer tissue, human heart tissue. Positive IF detected in A431 cells. Positive WB detected in A431 cells. Observed molecular weight by Western-blot: 66-74 kDa

## Preparation

This antibody was obtained by immunization of MVD recombinant protein (Accession Number: NM\_002461). Purification method: Antigen affinity purified.

## Formulation

PBS with 0.02% sodium azide and 50% glycerol pH 7.3.

## Storage

Store at -20°C. DO NOT ALIQUOT

## Clonality

Polyclonal

## Ig Type

Rabbit IgG

## Applications

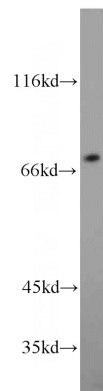
ELISA, WB, IHC, IF

## Dilutions

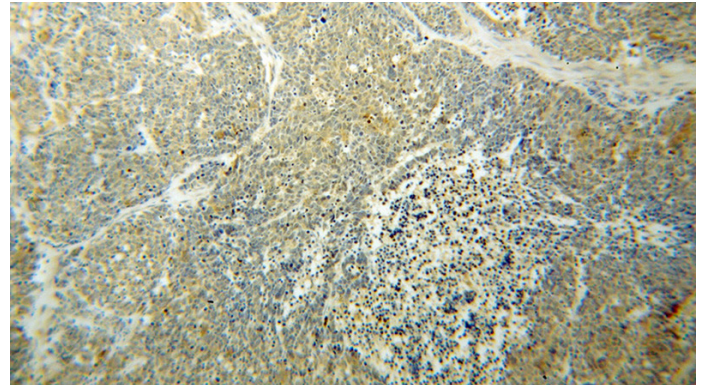
Recommended Dilution:

WB: 1:200-1:2000

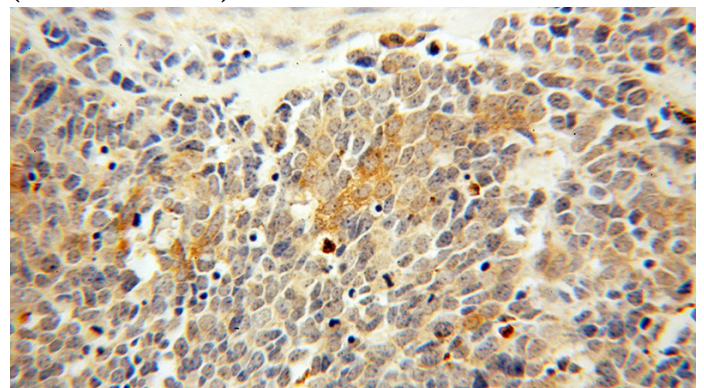
## Validations



A431 cells were subjected to SDS PAGE followed by western blot with Catalog No:112905(MVD antibody) at dilution of 1:800



Immunohistochemical of paraffin-embedded human lung cancer using Catalog No:112905(MVD antibody) at dilution of 1:50 (under 10x lens)



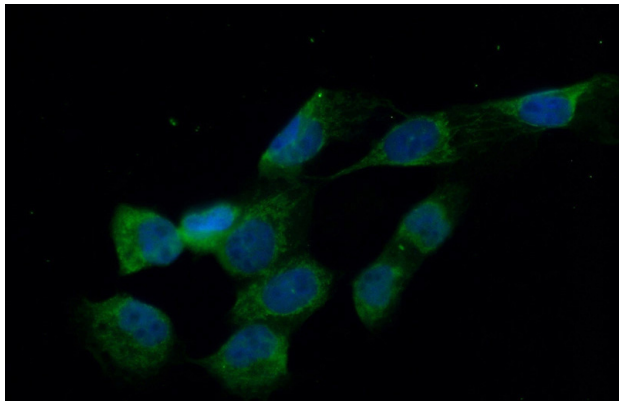
Immunohistochemical of paraffin-embedded

# MVD antibody

Catalog Number: 112905

---

human lung cancer using Catalog  
No:112905(MVD antibody) at dilution of 1:50  
(under 40x lens)



Immunofluorescent analysis of (10%  
Formaldehyde) fixed A431 cells using Catalog  
No:112905(MVD Antibody) at dilution of 1:50 and  
Alexa Fluor 488-conjugated AffiniPure Goat Anti-  
Rabbit IgG(H+L)