

MUC1/CA15-3 antibody



Catalog Number: 112887

Product name

MUC1/CA15-3 antibody

Specificity

Human; other species not tested.

Antibody description

MUC1/CA15-3 Rabbit Polyclonal antibody. Positive WB detected in Transfected HEK-293 cells. Positive FC detected in MCF-7 cells. Positive IHC detected in human ovary tumor tissue, human breast cancer tissue.

Preparation

This antibody was obtained by immunization of MUC1/CA15-3 recombinant protein (Accession Number: NM_001018016). Purification method: Antigen Affinity purified.

Formulation

PBS with 0.02% sodium azide and 50% glycerol pH 7.3.

Storage

Store at -20°C. DO NOT ALIQUOT

Clonality

Polyclonal

Ig Type

Rabbit IgG

Applications

ELISA, FC, IHC, WB

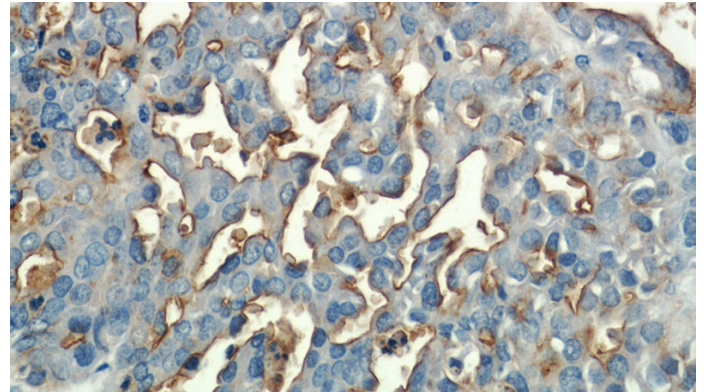
Dilutions

Recommended Dilution:

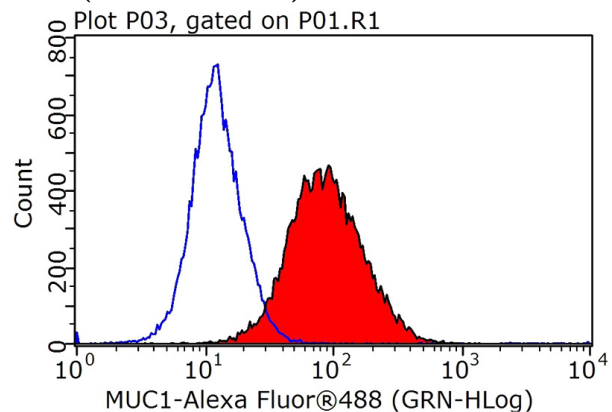
WB: 1:500-1:5000

IHC: 1:20-1:200

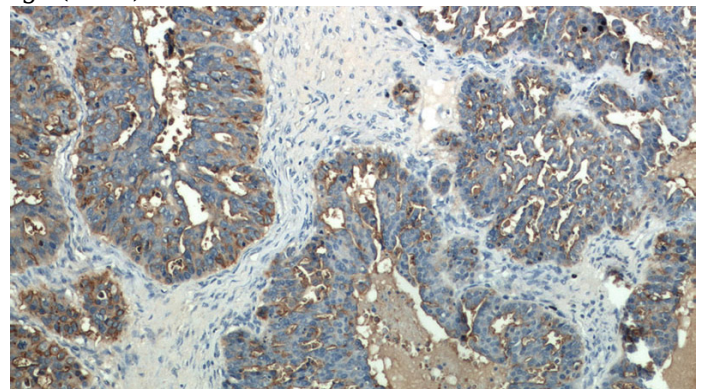
Validations



Immunohistochemical of paraffin-embedded human ovary tumor using Catalog No:112887(CA15-3,MUC1 antibody) at dilution of 1:50 (under 40x lens)



1X10⁶ MCF-7 cells were stained with 0.2ug CA15-3,MUC1 antibody (Catalog No:112887, red) and control antibody (blue). Fixed with 90% MeOH blocked with 3% BSA (30 min). Alexa Fluor 488-conjugated AffiniPure Goat Anti-Rabbit IgG(H+L) with dilution 1:1000.



MUC1/CA15-3 antibody



Catalog Number: 112887

Immunohistochemical of paraffin-embedded human ovary tumor using Catalog No:112887(CA15-3,MUC1 antibody) at dilution of 1:50 (under 10x lens)

Transfected HEK-293 cells were subjected to SDS PAGE followed by western blot with Catalog No:112887(CA15-3,MUC1 Antibody) at dilution of 1:1000

