

MSY2 antibody

Catalog Number: 112880

Product name

MSY2 antibody

IP: 1:200-1:1000

IHC: 1:20-1:200

Specificity

Human, Mouse, Rat; other species not tested.

Antibody description

MSY2 Rabbit Polyclonal antibody. Positive IHC detected in human ovary tumor tissue. Positive IP detected in PC-3 cells. Positive WB detected in human stomach tissue, human testis tissue. Observed molecular weight by Western-blot: 48 kDa

Preparation

This antibody was obtained by immunization of MSY2 recombinant protein (Accession Number: NM_015982). Purification method: Antigen affinity purified.

Formulation

PBS with 0.02% sodium azide and 50% glycerol pH 7.3.

Storage

Store at -20°C. DO NOT ALIQUOT

Clonality

Polyclonal

Ig Type

Rabbit IgG

Applications

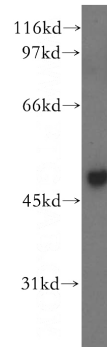
ELISA, IHC, WB, IP

Dilutions

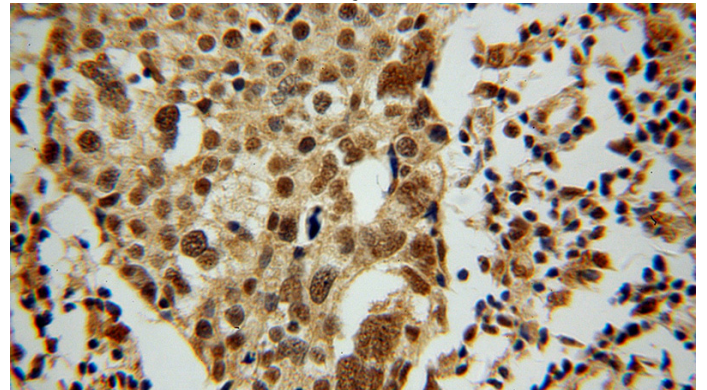
Recommended Dilution:

WB: 1:200-1:2000

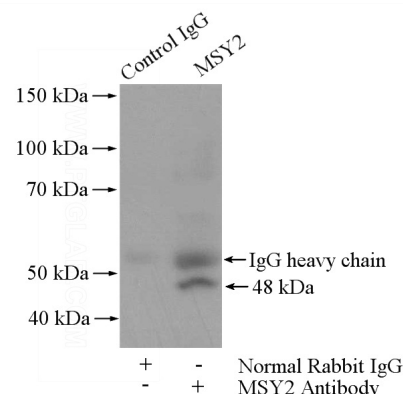
Validations



human stomach tissue were subjected to SDS PAGE followed by western blot with Catalog No:112880(YBX2 antibody) at dilution of 1:500



Immunohistochemical of paraffin-embedded human ovary tumor using Catalog No:112880(YBX2 antibody) at dilution of 1:50 (under 40x lens)



IP Result of anti-YBX2 (IP:Catalog No:112880,

MSY2 antibody



Catalog Number: 112880

4ug; Detection:Catalog No:112880 1:300) with PC-3 cells lysate 1720ug.