

MSH2 antibody

Catalog Number: 112867

Product name

MSH2 antibody

WB: 1:1000-1:10000

IP: 1:200-1:2000

Specificity

Human, Mouse, Rat; other species not tested.

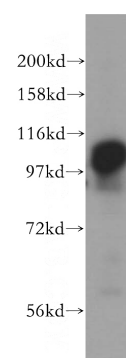
IHC: 1:20-1:200

IF: 1:10-1:100

Antibody description

MSH2 Rabbit Polyclonal antibody. Positive IP detected in HeLa cells. Positive WB detected in HeLa cells, A2780 cells. Positive FC detected in HeLa cells. Positive IF detected in HeLa cells. Positive IHC detected in human colon cancer tissue, human tonsil tissue. Observed molecular weight by Western-blot: 100 kDa-105 kDa

Validations



Preparation

This antibody was obtained by immunization of MSH2 recombinant protein (Accession Number: NM_000251). Purification method: Antigen affinity purified.

HeLa cells were subjected to SDS PAGE followed by western blot with Catalog No:112867(MSH2 antibody) at dilution of 1:500

Formulation

PBS with 0.02% sodium azide and 50% glycerol pH 7.3.

Storage

Store at -20°C. DO NOT ALIQUOT

Clonality

Polyclonal

Ig Type

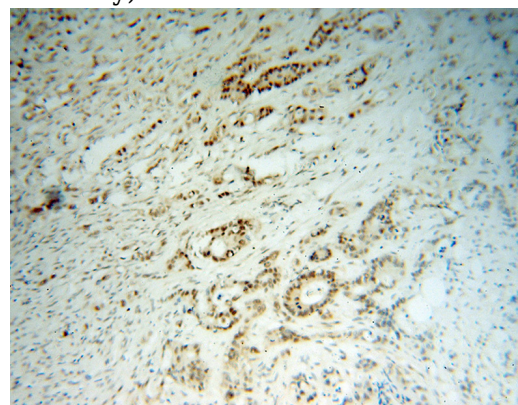
Rabbit IgG

Applications

ELISA, WB, IHC, IF, FC, IP

Dilutions

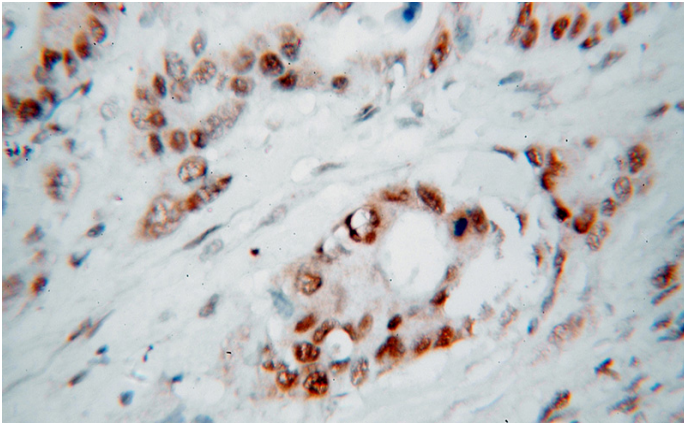
Recommended Dilution:



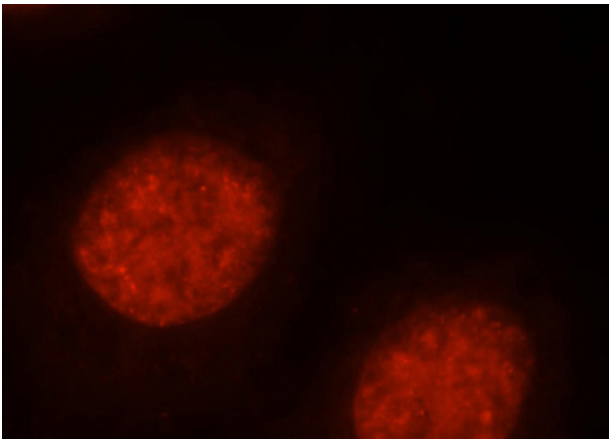
Immunohistochemical of paraffin-embedded human colon cancer using Catalog No:112867(MSH2 antibody) at dilution of 1:100 (under 10x lens)

MSH2 antibody

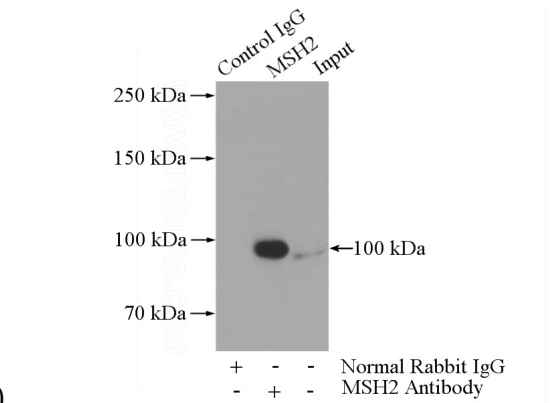
Catalog Number: 112867



Immunohistochemical of paraffin-embedded human colon cancer using Catalog No:112867(MSH2 antibody) at dilution of 1:100 (under 40x lens)

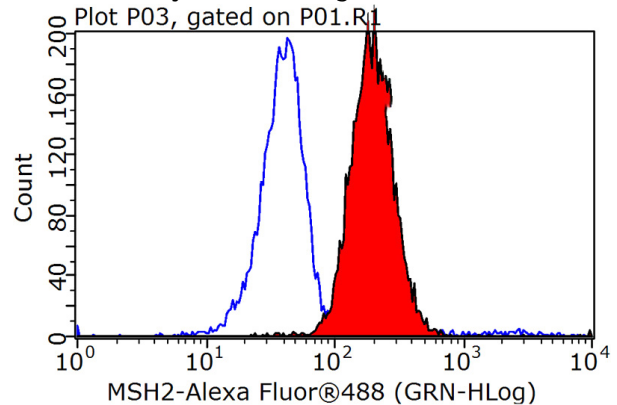


Immunofluorescent analysis of HeLa cells, using MSH2 antibody Catalog No:112867 at 1:25 dilution and Rhodamine-labeled goat anti-rabbit



IgG (red).

IP Result of anti-MSH2 (IP:Catalog No:112867, 5ug; Detection:Catalog No:112867 1:500) with HeLa cells lysate 2000ug.



1×10^6 HeLa cells were stained with 0.2ug MSH2 antibody (Catalog No:112867, red) and control antibody (blue). Fixed with 90% MeOH blocked with 3% BSA (30 min). Alexa Fluor 488-conjugated AffiniPure Goat Anti-Rabbit IgG(H+L) with dilution 1:1000.