

# MRPS26 antibody



Catalog Number: 112853

## Product name

MRPS26 antibody

## Specificity

Human, Mouse, Rat; other species not tested.

## Antibody description

MRPS26 Rabbit Polyclonal antibody. Positive IHC detected in human skin cancer tissue, human liver cancer tissue. Positive WB detected in HepG2 cells, HeLa cells, mouse brain tissue. Observed molecular weight by Western-blot: 24 kDa

## Preparation

This antibody was obtained by immunization of MRPS26 recombinant protein (Accession Number: NM\_030811). Purification method: Antigen affinity purified.

## Formulation

PBS with 0.1% sodium azide and 50% glycerol pH 7.3.

## Storage

Store at -20°C. DO NOT ALIQUOT

## Clonality

Polyclonal

## Ig Type

Rabbit IgG

## Applications

ELISA, WB, IHC

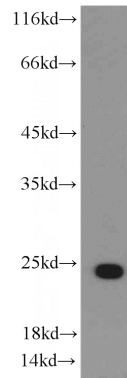
## Dilutions

Recommended Dilution:

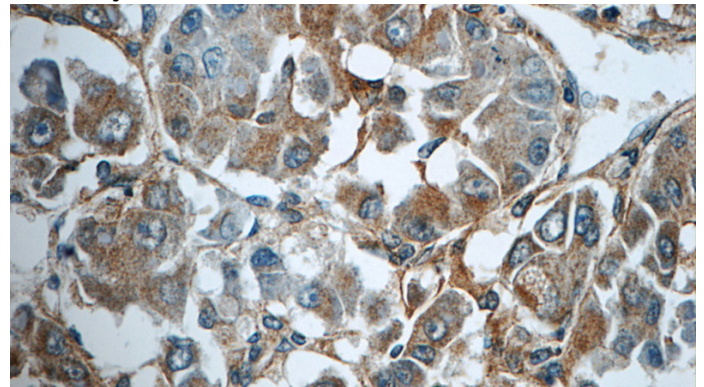
WB: 1:500-1:5000

IHC: 1:20-1:200

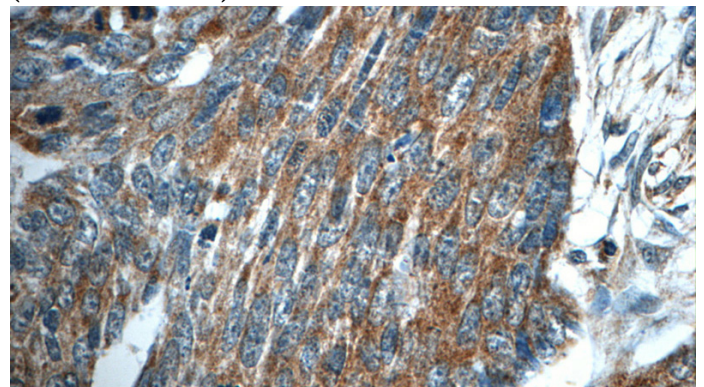
## Validations



HepG2 cells were subjected to SDS PAGE followed by western blot with Catalog No:112853(MRPS26 antibody) at dilution of 1:500



Immunohistochemistry of paraffin-embedded human liver cancer tissue slide using Catalog No:112853(MRPS26 Antibody) at dilution of 1:50 (under 40x lens)



Immunohistochemistry of paraffin-embedded human skin cancer tissue slide using Catalog No:112853(MRPS26 Antibody) at dilution of 1:50

# MRPS26 antibody



Catalog Number: 112853

---

(under 40x lens)