

MRPL46 antibody



Catalog Number: 112830

Product name

MRPL46 antibody

Specificity

human, mouse, rat; other species not tested.

Antibody description

MRPL46 Rabbit Polyclonal antibody. Positive IHC detected in human heart. Positive WB detected in human heart tissue, human testis tissue. Observed molecular weight by Western-blot: 32kd

Preparation

This antibody was obtained by immunization of MRPL46 recombinant protein (Accession Number: NM_022163). Purification method: Antigen affinity purified.

Formulation

PBS with 0.02% sodium azide and 50% glycerol pH 7.3.

Storage

Store at -20°C. DO NOT ALIQUOT

Clonality

Polyclonal

Ig Type

Rabbit IgG

Applications

ELISA, WB, IHC

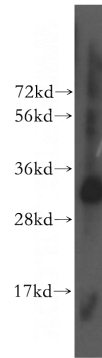
Dilutions

Recommended Dilution:

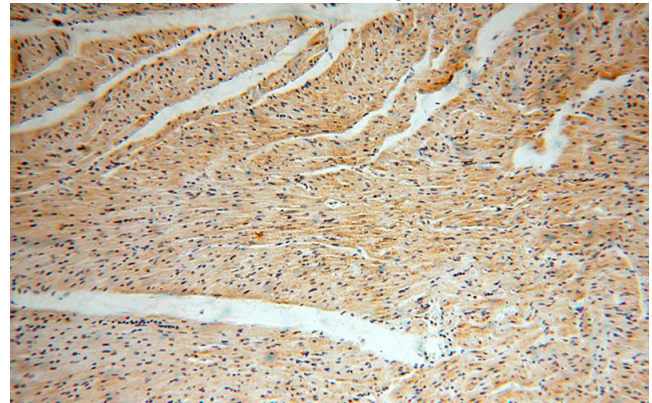
WB: 1:500-1:5000

IHC: 1:20-1:200

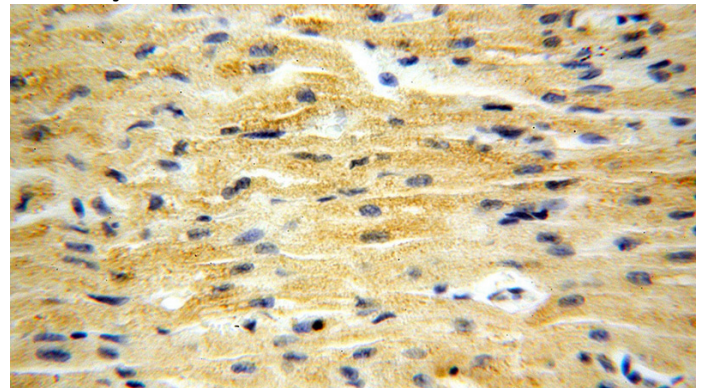
Validations



human heart tissue were subjected to SDS PAGE followed by western blot with Catalog No:112830(MRPL46 antibody) at dilution of 1:300



Immunohistochemical of paraffin-embedded human heart using Catalog No:112830(MRPL46 antibody) at dilution of 1:50 (under 10x lens)



Immunohistochemical of paraffin-embedded human heart using Catalog No:112830(MRPL46 antibody) at dilution of 1:50 (under 40x lens)