

MRPL45 antibody



Catalog Number: 112829

Product name

MRPL45 antibody

WB: 1:500-1:5000

IP: 1:200-1:2000

Specificity

Human, Mouse, Rat; other species not tested.

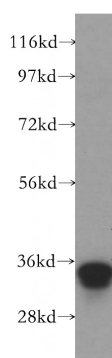
IHC: 1:20-1:200

IF: 1:20-1:200

Antibody description

MRPL45 Rabbit Polyclonal antibody. Positive IP detected in HeLa cells. Positive WB detected in HeLa cells, human brain tissue, human liver tissue, mouse liver tissue. Positive IF detected in HeLa cells. Positive IHC detected in human ovary tumor tissue. Observed molecular weight by Western-blot: 35kd

Validations



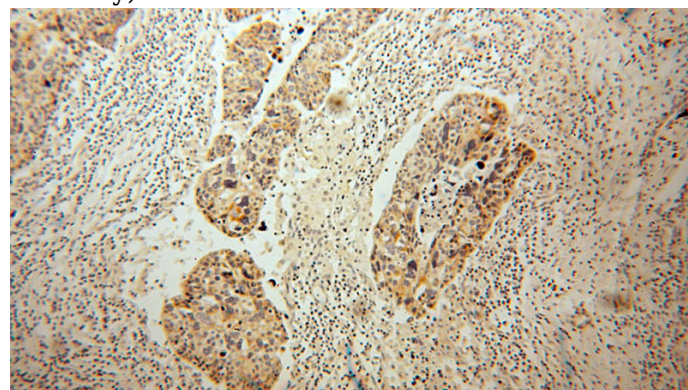
Preparation

This antibody was obtained by immunization of MRPL45 recombinant protein (Accession Number: BC006235). Purification method: Antigen affinity purified.

HeLa cells were subjected to SDS PAGE followed by western blot with Catalog No:112829(MRPL45 antibody) at dilution of 1:500

Formulation

PBS with 0.02% sodium azide and 50% glycerol pH 7.3.



Storage

Store at -20°C. DO NOT ALIQUOT

Clonality

Polyclonal

Ig Type

Rabbit IgG

Immunohistochemical of paraffin-embedded human ovary tumor using Catalog No:112829(MRPL45 antibody) at dilution of 1:100 (under 10x lens)

Applications

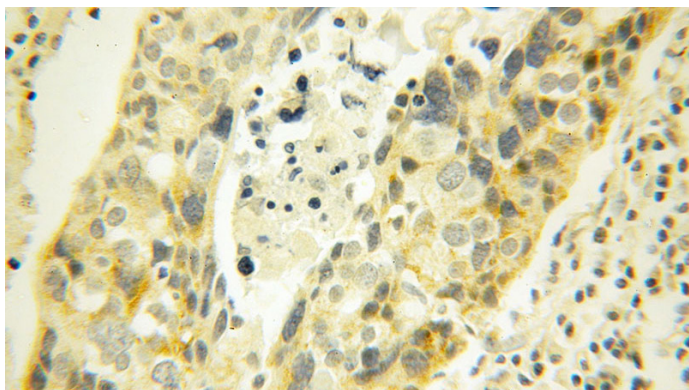
ELISA, WB, IHC, IP, IF

Dilutions

Recommended Dilution:

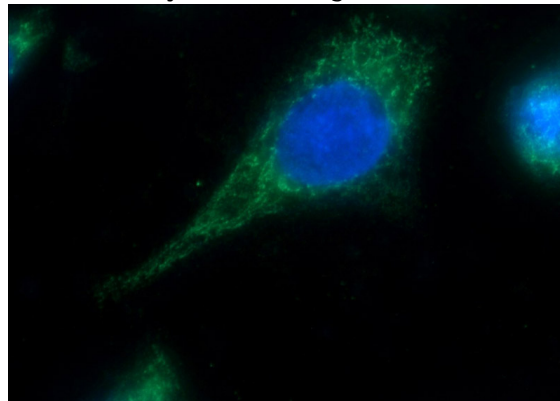
MRPL45 antibody

Catalog Number: 112829



Immunohistochemical of paraffin-embedded human ovary tumor using Catalog No:112829(MRPL45 antibody) at dilution of 1:100 (under 40x lens)

IP Result of anti-MRPL45 (IP:Catalog No:112829, 3ug; Detection:Catalog No:112829 1:500) with HeLa cells lysate 2000ug.



Immunofluorescent analysis of HeLa cells using Catalog No:112829(MRPL45 Antibody) at dilution of 1:50 and Alexa Fluor 488-conjugated AffiniPure Goat Anti-Rabbit IgG(H+L)

