

# MTRF1L antibody



Catalog Number: 112797

## Product name

MTRF1L antibody

## Specificity

Human, Mouse, Rat; other species not tested.

## Antibody description

MTRF1L Rabbit Polyclonal antibody. Positive WB detected in HEK-293 cells, HeLa cells, HepG2 cells. Observed molecular weight by Western-blot: 40-46 kDa

## Preparation

This antibody was obtained by immunization of MTRF1L recombinant protein (Accession Number: NM\_019041). Purification method: Antigen affinity purified.

## Formulation

PBS with 0.1% sodium azide and 50% glycerol pH 7.3.

## Storage

Store at -20°C. DO NOT ALIQUOT

## Clonality

Polyclonal

## Ig Type

Rabbit IgG

## Applications

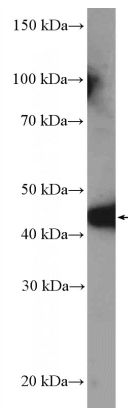
ELISA, WB

## Dilutions

Recommended Dilution:

WB: 1:200-1:2000

## Validations



HEK-293 cells were subjected to SDS PAGE followed by western blot with Catalog No:112797(MTRF1L Antibody) at dilution of 1:600