

MTERF antibody



Catalog Number: 112769

Product name

MTERF antibody

Specificity

Human, Mouse, Rat; other species not tested.

Antibody description

MTERF Rabbit Polyclonal antibody. Positive WB detected in HeLa cells, Jurkat cells. Observed molecular weight by Western-blot: 31kd

Preparation

This antibody was obtained by immunization of MTERF recombinant protein (Accession Number: XM_006716126). Purification method: Antigen affinity purified.

Formulation

PBS with 0.02% sodium azide and 50% glycerol pH 7.3.

Storage

Store at -20°C. DO NOT ALIQUOT

Clonality

Polyclonal

Ig Type

Rabbit IgG

Applications

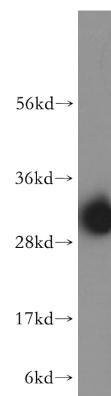
ELISA, WB

Dilutions

Recommended Dilution:

WB: 1:500-1:5000

Validations



HeLa cells were subjected to SDS PAGE followed by western blot with Catalog No:112769(MTERF antibody) at dilution of 1:400