

MOK antibody

Catalog Number: 112732

Product name

MOK antibody

IHC: 1:20-1:200

IF: 1:50-1:500

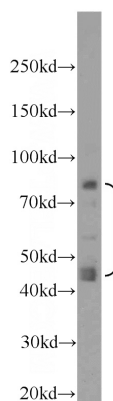
Specificity

Human; other species not tested.

Validations

Antibody description

MOK Rabbit Polyclonal antibody. Positive WB detected in HeLa cells, HepG2 cells. Positive FC detected in HeLa cells. Positive IHC detected in human hepat°Cirrhosis tissue, human heart tissue. Positive IF detected in HeLa cells. Observed molecular weight by Western-blot: 42 kDa,85 kDa



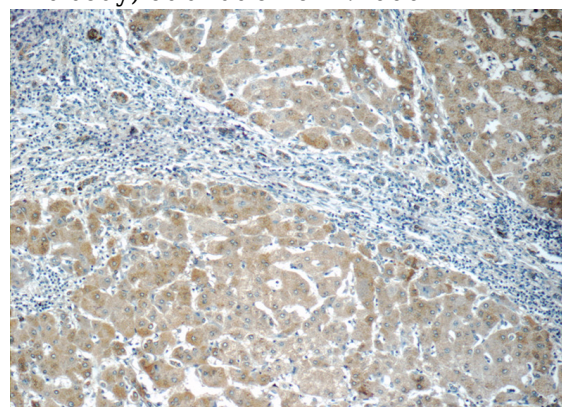
Preparation

This antibody was obtained by immunization of MOK recombinant protein (Accession Number: BC053536). Purification method: Antigen Affinity purified.

HeLa cells were subjected to SDS PAGE followed by western blot with Catalog No:112732(RAGE Antibody) at dilution of 1:1000

Formulation

PBS with 0.02% sodium azide and 50% glycerol pH 7.3.



Storage

Store at -20°C. DO NOT ALIQUOT

Clonality

Polyclonal

Immunohistochemistry of paraffin-embedded human hepatocirrhosis tissue slide using Catalog No:112732(RAGE Antibody) at dilution of 1:50 (under 10x lens)

Ig Type

Rabbit IgG

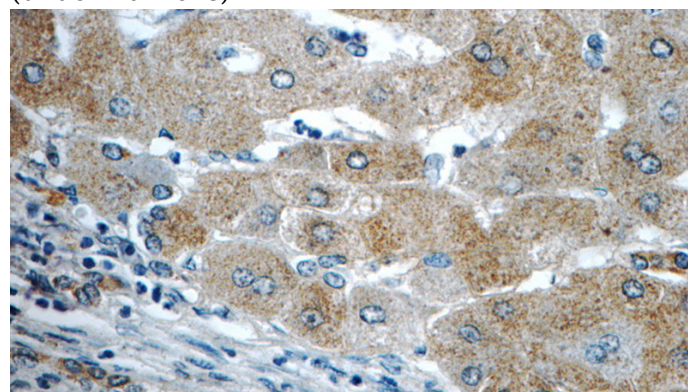
Applications

ELISA, WB, IHC, IF, FC

Dilutions

Recommended Dilution:

WB: 1:500-1:5000

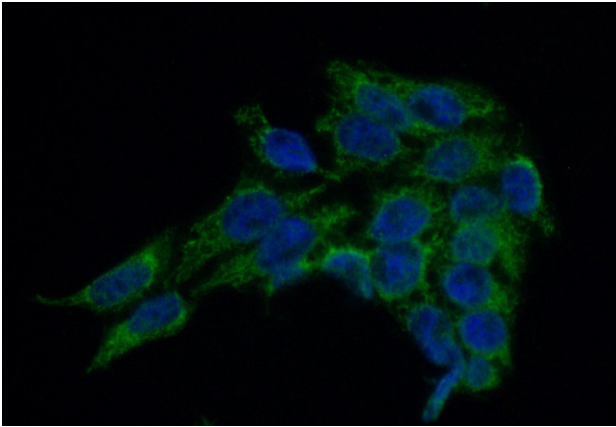


Immunohistochemistry of paraffin-embedded

MOK antibody

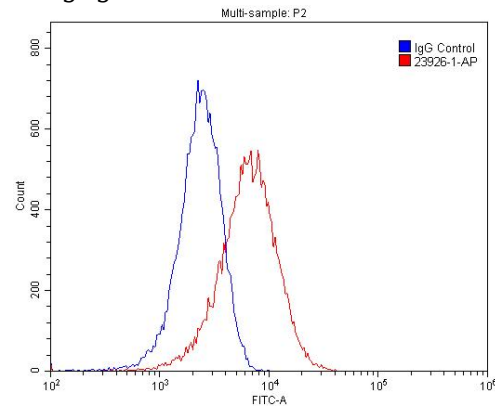
Catalog Number: 112732

human hepatocirrhosis tissue slide using Catalog No:112732(RAGE Antibody) at dilution of 1:50 (under 40x lens)



Immunofluorescent analysis of (-20oc Ethanol) fixed HeLa cells using Catalog No:112732(RAGE Antibody) at dilution of 1:50 and Alexa Fluor 488-

conjugated AffiniPure Goat Anti-Rabbit IgG(H+L)



1X10⁶ HeLa cells were stained with 0.2ug RAGE antibody (Catalog No:112732, red) and control antibody (blue). Fixed with 4% PFA blocked with 3% BSA (30 min). Alexa Fluor 488-conjugated AffiniPure Goat Anti-Rabbit IgG(H+L) with dilution 1:1500.