

# MMP28 antibody



Catalog Number: 112705

## Product name

MMP28 antibody

WB: 1:500-1:5000

IHC: 1:20-1:200

## Specificity

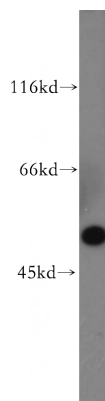
Human, Mouse, Rat; other species not tested.

IF: 1:10-1:100

## Antibody description

MMP28 Rabbit Polyclonal antibody. Positive IF detected in A549 cells. Positive IHC detected in human kidney tissue, human ovary tissue, human skin cancer tissue, human testis tissue. Positive WB detected in A549 cells, human colon tissue, mouse heart tissue. Observed molecular weight by Western-blot: 48 kDa

## Validations



## Preparation

This antibody was obtained by immunization of MMP28 recombinant protein (Accession Number: NM\_032950). Purification method: Antigen affinity purified.

A549 cells were subjected to SDS PAGE followed by western blot with Catalog No:112705(MMP28 antibody) at dilution of 1:500

## Formulation

PBS with 0.02% sodium azide and 50% glycerol pH 7.3.

## Storage

Store at -20°C. DO NOT ALIQUOT

## Clonality

Polyclonal

## Ig Type

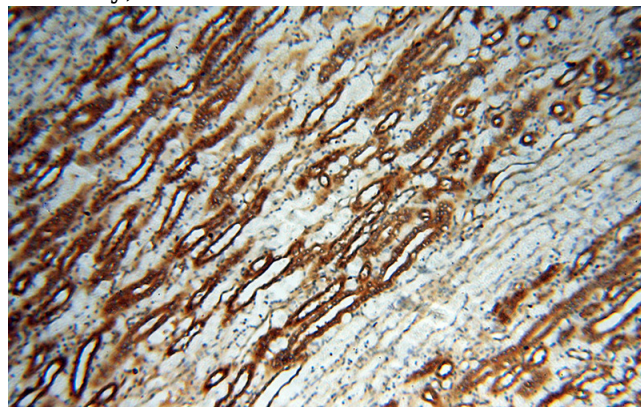
Rabbit IgG

## Applications

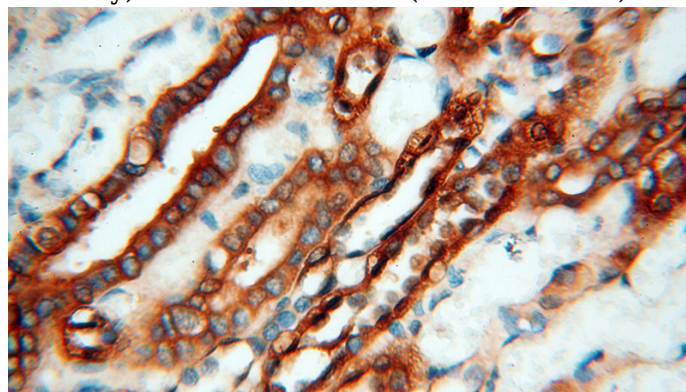
ELISA, WB, IHC, IF

## Dilutions

Recommended Dilution:



Immunohistochemical of paraffin-embedded human kidney using Catalog No:112705(MMP28 antibody) at dilution of 1:100 (under 10x lens)

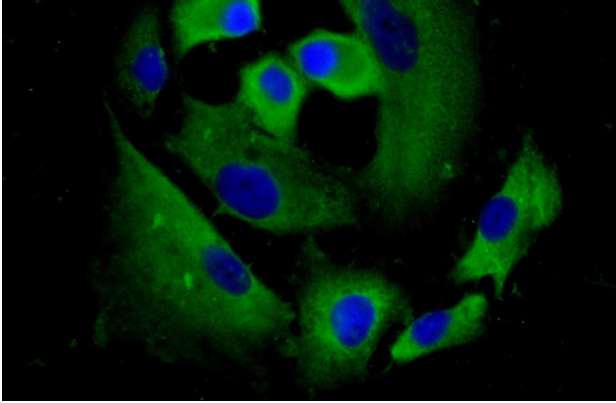


# MMP28 antibody

Catalog Number: 112705

---

Immunohistochemical of paraffin-embedded human kidney using Catalog No:112705(MMP28 antibody) at dilution of 1:100 (under 40x lens)



Immunofluorescent analysis of (-20oc Ethanol) fixed A549 cells using Catalog No:112705(MMP28 Antibody) at dilution of 1:25 and Alexa Fluor 488-conjugated AffiniPure Goat Anti-Rabbit IgG(H+L)