

**Product name**

MLX antibody

**Specificity**

human, mouse, rat; other species not tested.

**Antibody description**

MLX Rabbit Polyclonal antibody. Positive WB detected in mouse thymus tissue, mouse ovary tissue. Positive IHC detected in human prostate cancer. Observed molecular weight by Western-blot: 33kd

**Preparation**

This antibody was obtained by immunization of MLX recombinant protein (Accession Number: NM\_013383). Purification method: Antigen affinity purified.

**Formulation**

PBS with 0.02% sodium azide and 50% glycerol pH 7.3.

**Storage**

Store at -20°C. DO NOT ALIQUOT

**Clonality**

Polyclonal

**Ig Type**

Rabbit IgG

**Applications**

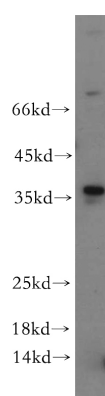
ELISA, WB, IHC

**Dilutions**

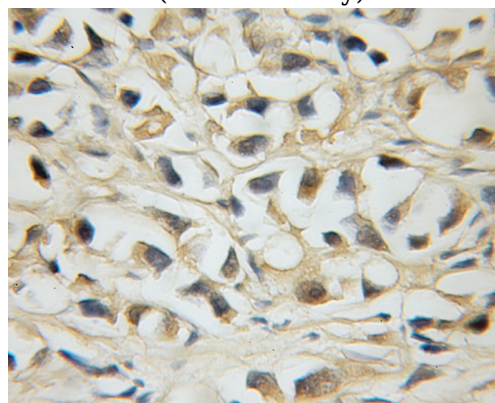
Recommended Dilution:

WB: 1:200-1:2000

IHC: 1:20-1:200

**Validations**

mouse thymus tissue were subjected to SDS PAGE followed by western blot with Catalog No:112686(MLX antibody) at dilution of 1:200



Immunohistochemical of paraffin-embedded human prostate cancer using Catalog No:112686(MLX antibody) at dilution of 1:50 (under 10x lens)