

# Melanophilin antibody



Catalog Number: 112651

## Product name

Melanophilin antibody

IP: 1:200-1:2000

IHC: 1:20-1:200

## Specificity

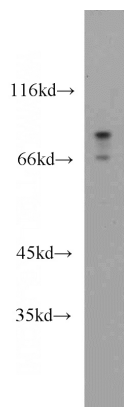
Human, Mouse, Rat; other species not tested.

IF: 1:20-1:200

## Antibody description

Melanophilin Rabbit Polyclonal antibody. Positive IHC detected in human skin cancer tissue. Positive IF detected in HeLa cells. Positive IP detected in A375 cells. Positive WB detected in A375 cells. Observed molecular weight by Western-blot: 66 kDa, 80 kDa

## Validations



## Preparation

This antibody was obtained by immunization of Melanophilin recombinant protein (Accession Number: NM\_024101). Purification method: Antigen affinity purified.

A375 cells were subjected to SDS PAGE followed by western blot with Catalog No:112651 (MLPH antibody) at dilution of 1:1000

## Formulation

PBS with 0.1% sodium azide and 50% glycerol pH 7.3.

## Storage

Store at -20°C. DO NOT ALIQUOT

## Clonality

Polyclonal

## Ig Type

Rabbit IgG

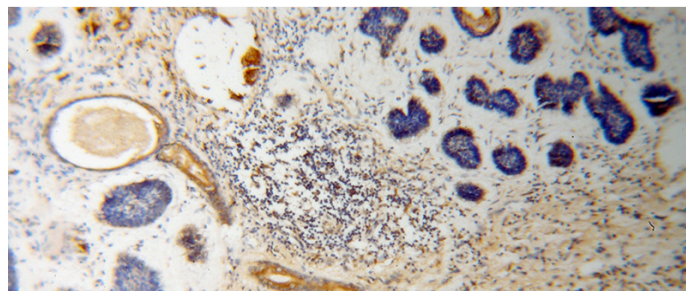
## Applications

ELISA, WB, IHC, IP, IF

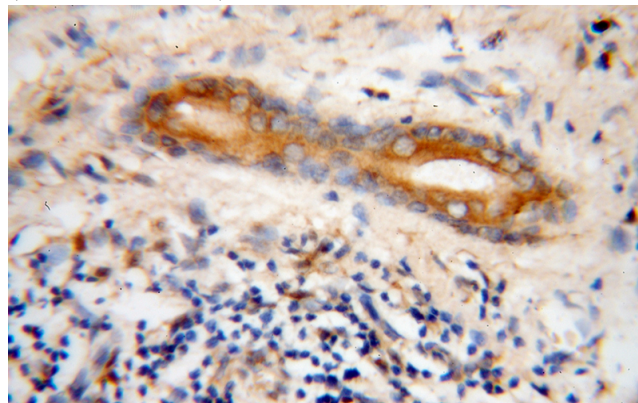
## Dilutions

Recommended Dilution:

WB: 1:200-1:2000



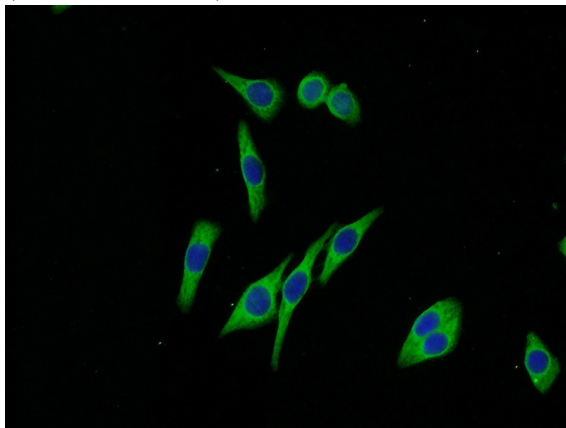
Immunohistochemical of paraffin-embedded human skin cancer using Catalog No:112651 (MLPH antibody) at dilution of 1:50 (under 10x lens)



# Melanophilin antibody

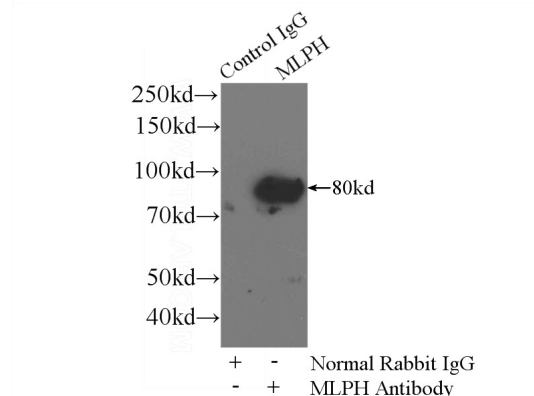
Catalog Number: 112651

Immunohistochemical of paraffin-embedded human skin cancer using Catalog No:112651(MLPH antibody) at dilution of 1:50 (under 40x lens)



Immunofluorescent analysis of (-20oc Ethanol)

fixed HeLa cells using Catalog No:112651(MLPH Antibody) at dilution of 1:50 and Alexa Fluor 488-conjugated AffiniPure Goat Anti-Rabbit IgG(H+L)



IP Result of anti-MLPH (IP:Catalog No:112651, 4ug; Detection:Catalog No:112651 1:600) with A375 cells lysate 3600ug.