

# MGLL antibody

Catalog Number: 112599

## Product name

MGLL antibody

## Immunogen

[Human MGLL Recombinant protein \(GST tag\)](#)

## Specificity

Human, Mouse, Rat; other species not tested.

## Antibody description

MGLL Rabbit Polyclonal antibody. Positive IP detected in mouse liver tissue. Positive WB detected in Transfected HEK-293 cells. Positive IHC detected in human liver cancer tissue.

## Preparation

This antibody was obtained by immunization of MGLL recombinant protein (Accession Number: NM\_007283). Purification method: Antigen affinity purified.

## Formulation

PBS with 0.02% sodium azide and 50% glycerol pH 7.3.

## Storage

Store at -20°C. DO NOT ALIQUOT

## Clonality

Polyclonal

## Ig Type

Rabbit IgG

## Applications

ELISA, IHC, WB, IP

## Dilutions

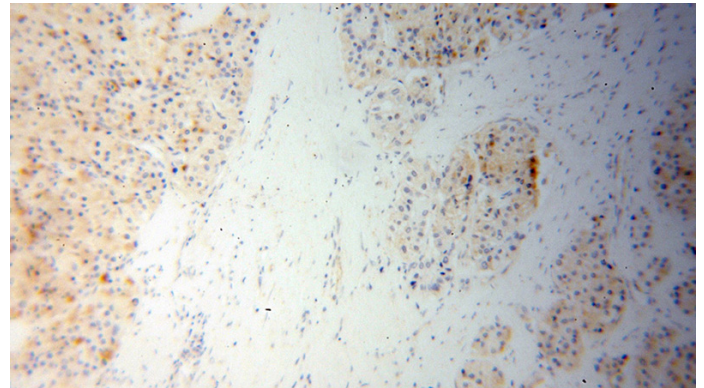
Recommended Dilution:

WB: 1:500-1:5000

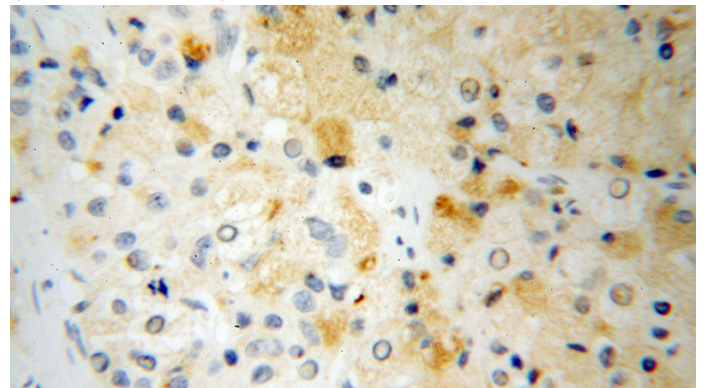
IP: 1:200-1:1000

IHC: 1:20-1:200

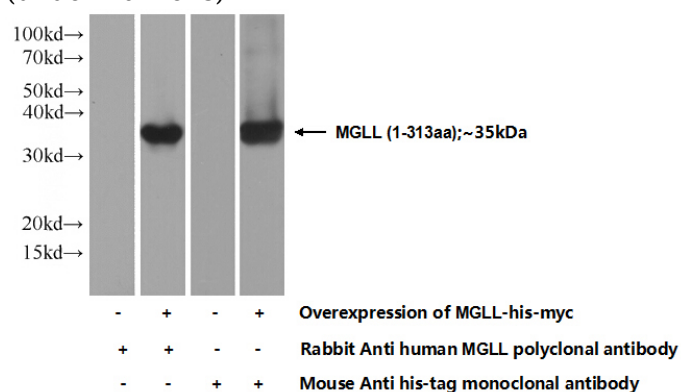
## Validations



Immunohistochemical of paraffin-embedded human liver cancer using Catalog No:112599(MGLL antibody) at dilution of 1:100 (under 10x lens)



Immunohistochemical of paraffin-embedded human liver cancer using Catalog No:112599(MGLL antibody) at dilution of 1:100 (under 40x lens)



# MGLL antibody

Catalog Number: 112599

---

Transfected HEK-293 cells were subjected to SDS PAGE followed by western blot with Catalog No:112599(MGLL Antibody) at dilution of 1:1000

IP Result of anti-MGLL (IP:Catalog No:112599, 4ug; Detection:Catalog No:112599 1:300) with mouse liver tissue lysate 4000ug.

