

# MED30 antibody

Catalog Number: 112590

## Product name

MED30 antibody

WB: 1:200-1:2000

IP: 1:200-1:2000

## Specificity

Human, Mouse; other species not tested.

## Antibody description

MED30 Rabbit Polyclonal antibody. Positive WB detected in human heart tissue, Transfected HEK-293 cells. Positive IP detected in mouse heart tissue. Observed molecular weight by Western-blot: 20-25 kDa

## Preparation

This antibody was obtained by immunization of MED30 recombinant protein (Accession Number: NM\_080651). Purification method: Antigen affinity purified.

## Formulation

PBS with 0.02% sodium azide and 50% glycerol pH 7.3.

## Storage

Store at -20°C. DO NOT ALIQUOT

## Clonality

Polyclonal

## Ig Type

Rabbit IgG

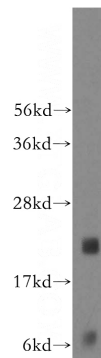
## Applications

ELISA, WB, IP

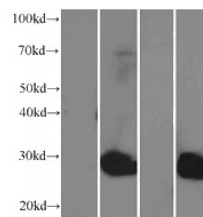
## Dilutions

Recommended Dilution:

## Validations



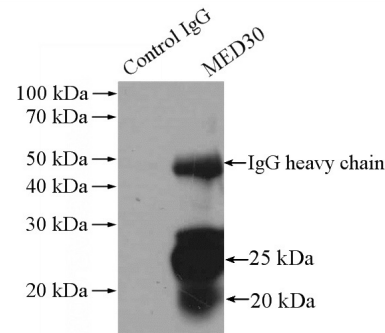
human heart tissue were subjected to SDS PAGE followed by western blot with Catalog No:112590(MED30 antibody) at dilution of 1:200



←MED30 ( 1-178aa ) ;~28kDa

-	+	-	+	Overexpression of MED30-myc-his
+	+	-	-	Rabbit Anti human MED30 polyclonal antibody
-	-	+	+	Mouse Anti his-tag monoclonal antibody

Transfected HEK-293 cells were subjected to SDS PAGE followed by western blot with Catalog No:112590(MED30 Antibody) at dilution of 1:1000



+	-	Normal Rabbit IgG
-	+	MED30 antibody

IP Result of anti-MED30 (IP:Catalog No:112590, 4ug; Detection:Catalog No:112590 1:500) with mouse heart tissue lysate 4000ug.