

METTL1 antibody

Catalog Number: 112516

Product name

METTL1 antibody

Specificity

human, mouse, rat; other species not tested.

Antibody description

METTL1 Rabbit Polyclonal antibody. Positive IHC detected in human gliomas. Positive WB detected in A2780 cells, human brain tissue, human heart tissue, human liver tissue. Observed molecular weight by Western-blot: 31kd

Preparation

This antibody was obtained by immunization of METTL1 recombinant protein (Accession Number: NM_005371). Purification method: Antigen affinity purified.

Formulation

PBS with 0.02% sodium azide and 50% glycerol pH 7.3.

Storage

Store at -20°C. DO NOT ALIQUOT

Clonality

Polyclonal

Ig Type

Rabbit IgG

Applications

ELISA, WB, IHC

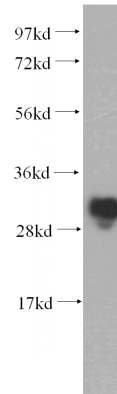
Dilutions

Recommended Dilution:

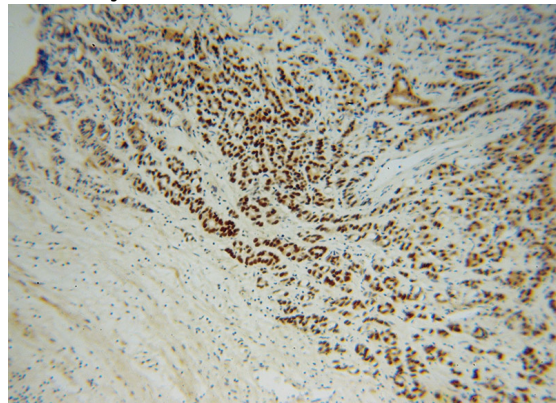
WB: 1:1000-1:10000

IHC: 1:20-1:200

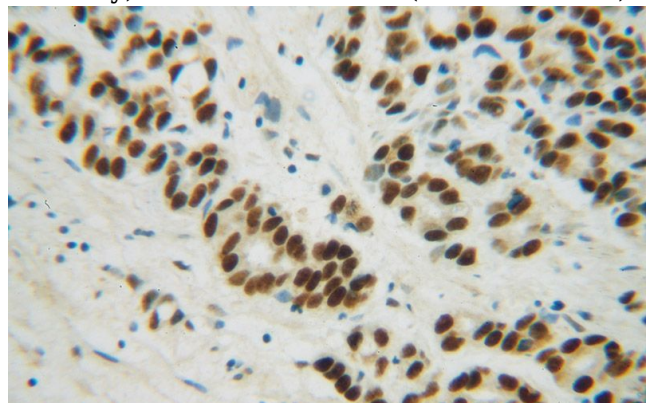
Validations



A2780 cells were subjected to SDS PAGE followed by western blot with Catalog No:112516(METTL1 antibody) at dilution of 1:500



Immunohistochemical of paraffin-embedded human gliomas using Catalog No:112516(METTL1 antibody) at dilution of 1:100 (under 10x lens)



Immunohistochemical of paraffin-embedded human gliomas using Catalog No:112516(METTL1 antibody) at dilution of 1:100 (under 40x lens)