

# MBD2 antibody



Catalog Number: 112502

---

## Product name

MBD2 antibody

## Specificity

Human, Rat; other species not tested.

## Antibody description

MBD2 Rabbit Polyclonal antibody. Positive WB detected in Jurkat cells, A431 cells, HEK-293 cells, human brain tissue, RAW264.7 cells. Observed molecular weight by Western-blot: 43-45 kDa

## Preparation

This antibody was obtained by immunization of Peptide (Accession Number: NM\_003927). Purification method: Antigen affinity purified.

## Formulation

PBS with 0.02% sodium azide and 50% glycerol pH 7.3.

## Storage

Store at -20°C. DO NOT ALIQUOT

## Clonality

Polyclonal

## Ig Type

Rabbit IgG

## Applications

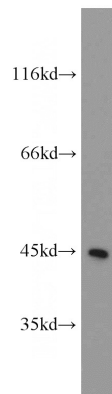
ELISA, WB

## Dilutions

Recommended Dilution:

WB: 1:200-1:2000

## Validations



Jurkat cells were subjected to SDS PAGE followed by western blot with Catalog No:112502(MBD2 antibody) at dilution of 1:1000