

Mast Cell Chymase antibody

Catalog Number: 112489

Product name

Mast Cell Chymase antibody

Specificity

Human, Mouse, Rat; other species not tested.

Antibody description

Mast Cell Chymase Rabbit Polyclonal antibody. Positive WB detected in mouse heart tissue, human heart tissue, human placenta tissue, MCF7 cells. Positive IP detected in mouse heart tissue. Observed molecular weight by Western-blot: 27-30 kDa

Preparation

This antibody was obtained by immunization of Mast Cell Chymase recombinant protein (Accession Number: NM_001836). Purification method: Antigen affinity purified.

Formulation

PBS with 0.02% sodium azide and 50% glycerol pH 7.3.

Storage

Store at -20°C. DO NOT ALIQUOT

Clonality

Polyclonal

Ig Type

Rabbit IgG

Applications

ELISA, WB, IP

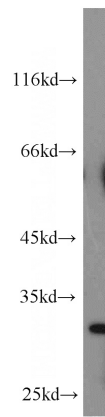
Dilutions

Recommended Dilution:

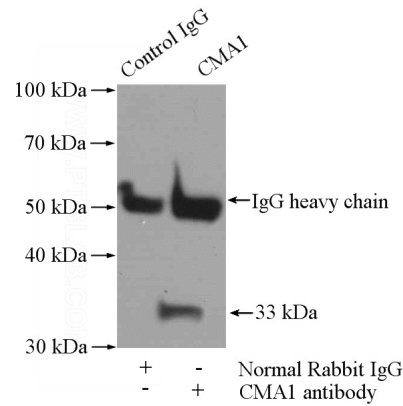
WB: 1:200-1:2000

IP: 1:200-1:1000

Validations



mouse heart tissue were subjected to SDS PAGE followed by western blot with Catalog No:112489(CMA1 antibody) at dilution of 1:500



IP Result of anti-CMA1 (IP:Catalog No:112489, 4ug; Detection:Catalog No:112489 1:300) with mouse heart tissue lysate 2400ug.