

# Maspin antibody



Catalog Number: 112488

## Product name

Maspin antibody

## Specificity

Human, Mouse, Rat; other species not tested.

## Antibody description

Maspin Rabbit Polyclonal antibody. Positive WB detected in HepG2 cells, A431 cells, HeLa cells. Positive IHC detected in human lung cancer tissue, human breast cancer tissue. Observed molecular weight by Western-blot: 42 kDa

## Preparation

This antibody was obtained by immunization of Maspin recombinant protein (Accession Number: BC020713). Purification method: Antigen affinity purified.

## Formulation

PBS with 0.02% sodium azide and 50% glycerol pH 7.3.

## Storage

Store at -20°C. DO NOT ALIQUOT

## Clonality

Polyclonal

## Ig Type

Rabbit IgG

## Applications

ELISA, WB, IHC

## Dilutions

Recommended Dilution:

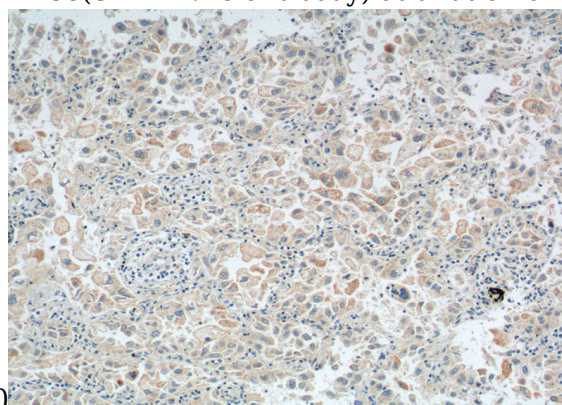
WB: 1:500-1:5000

IHC: 1:50-1:500

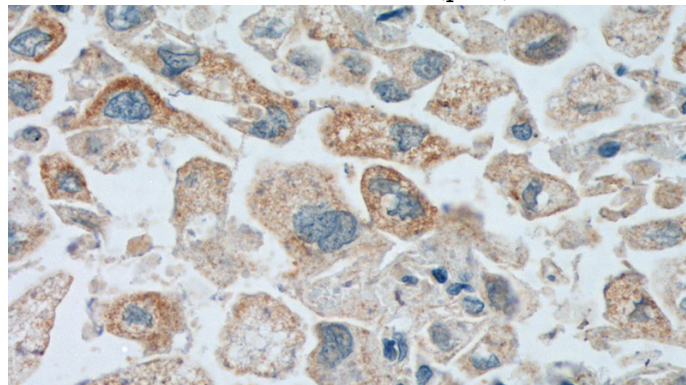
## Validations



HepG2 cells were subjected to SDS PAGE followed by western blot with Catalog No:112488(SERPINB5 antibody) at dilution of



Immunohistochemistry of paraffin-embedded human lung cancer tissue slide using Catalog No:112488(SERPINB5 Antibody) at dilution of 1:200 (under 10x lens). heat mediated antigen retrieved with Tris-EDTA buffer(pH9).



Immunohistochemistry of paraffin-embedded human lung cancer tissue slide using Catalog

# Maspin antibody



Catalog Number: 112488

---

No:112488(SERPINB5 Antibody) at dilution of

1:200 (under 40x lens). heat mediated antigen  
retrieved with Tris-EDTA buffer(pH9).