

MALT1 antibody

Catalog Number: 112459

Product name

MALT1 antibody

IHC: 1:20-1:200

IF: 1:10-1:100

Specificity

Human, Mouse, Rat; other species not tested.

Antibody description

MALT1 Rabbit Polyclonal antibody. Positive WB detected in HeLa cells, HEK-293 cells, mouse testis tissue. Positive IF detected in HepG2 cells. Positive IHC detected in human lymphoma tissue. Positive FC detected in HeLa cells. Observed molecular weight by Western-blot: 90 kDa

Preparation

This antibody was obtained by immunization of MALT1 recombinant protein (Accession Number: NM_173844). Purification method: Antigen affinity purified.

Formulation

PBS with 0.1% sodium azide and 50% glycerol pH 7.3.

Storage

Store at -20°C. DO NOT ALIQUOT

Clonality

Polyclonal

Ig Type

Rabbit IgG

Applications

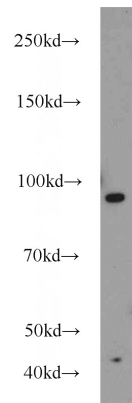
ELISA, IHC, IF, WB, FC

Dilutions

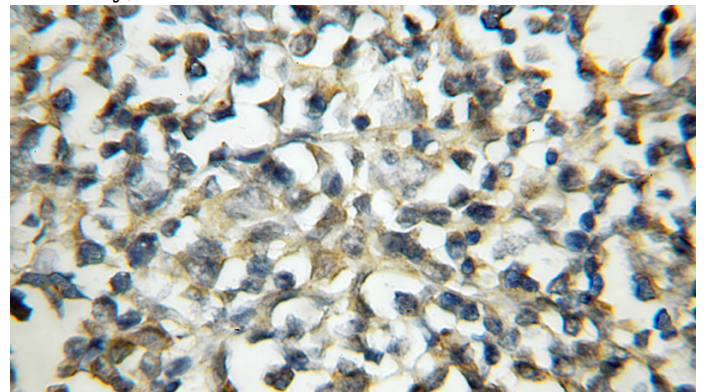
Recommended Dilution:

WB: 1:200-1:2000

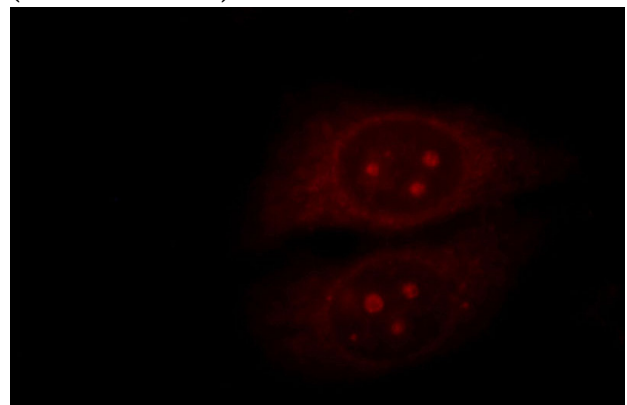
Validations



HeLa cells were subjected to SDS PAGE followed by western blot with Catalog No:112459(MALT1 antibody) at dilution of 1:600



Immunohistochemical of paraffin-embedded human lymphoma using Catalog No:112459(MALT1 antibody) at dilution of 1:50 (under 10x lens)



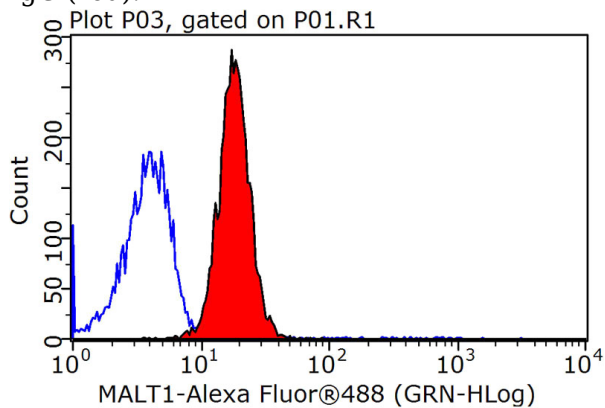
Immunofluorescent analysis of HepG2 cells, using

MALT1 antibody



Catalog Number: 112459

MALT1 antibody Catalog No:112459 at 1:25 dilution and Rhodamine-labeled goat anti-rabbit IgG (red).



1X10⁶ HeLa cells were stained with 0.2ug MALT1 antibody (Catalog No:112459, red) and control antibody (blue). Fixed with 90% MeOH blocked with 3% BSA (30 min). Alexa Fluor 488-conjugated AffiniPure Goat Anti-Rabbit IgG(H+L) with dilution 1:1500.