

MAGT1 antibody



Catalog Number: 112456

Product name

MAGT1 antibody

Recommended Dilution:

WB: 1:500-1:5000

Specificity

Human, Mouse, Rat; other species not tested.

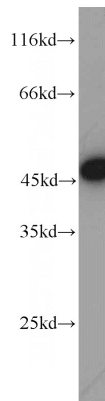
IHC: 1:20-1:200

IF: 1:10-1:100

Antibody description

MAGT1 Rabbit Polyclonal antibody. Positive IF detected in HepG2 cells. Positive IHC detected in human liver tissue, human skeletal muscle tissue. Positive WB detected in Jurkat cells, HEK-293 cells, HeLa cells, HT-1080 cells, human liver tissue, mouse brain tissue, mouse colon tissue, mouse heart tissue, mouse kidney tissue. Observed molecular weight by Western-blot: 45-47 kDa

Validations



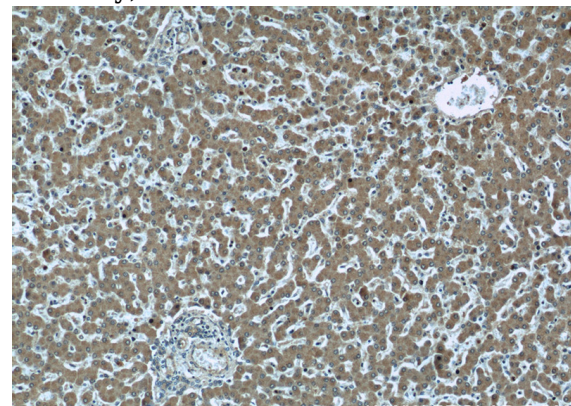
Preparation

This antibody was obtained by immunization of MAGT1 recombinant protein (Accession Number: NM_001367916). Purification method: Antigen affinity purified.

Jurkat cells were subjected to SDS PAGE followed by western blot with Catalog No:112456(MAGT1 antibody) at dilution of 1:1000

Formulation

PBS with 0.02% sodium azide and 50% glycerol pH 7.3.



Storage

Store at -20°C. DO NOT ALIQUOT

Clonality

Polyclonal

Immunohistochemical of paraffin-embedded human liver using Catalog No:112456(MAGT1 antibody) at dilution of 1:50 (under 10x lens)

Ig Type

Rabbit IgG

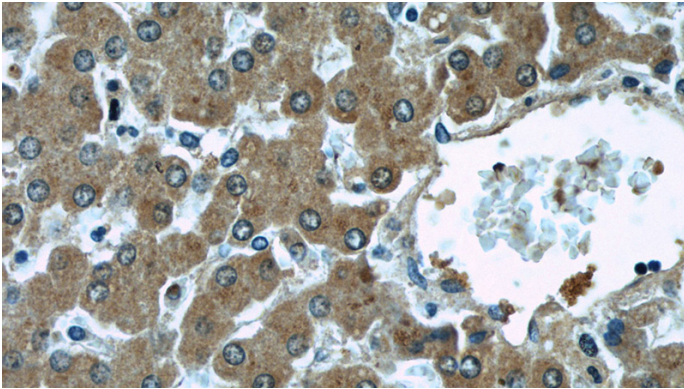
Applications

ELISA, WB, IHC, IF

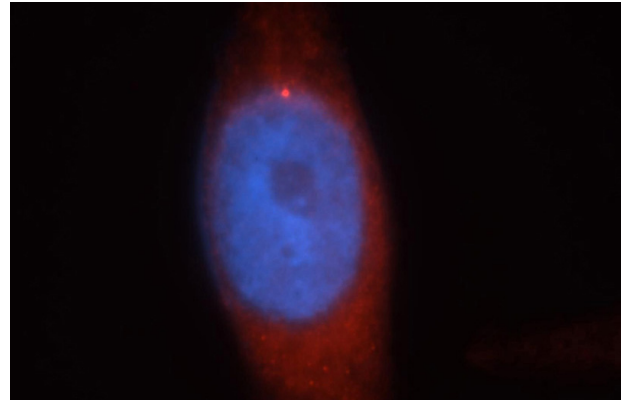
Dilutions

MAGT1 antibody

Catalog Number: 112456



Immunohistochemical of paraffin-embedded human liver using Catalog No:112456(MAGT1 antibody) at dilution of 1:50 (under 40x lens)



Immunofluorescent analysis of HepG2 cells, using Catalog No:112456 and Rhodamine-labeled goat anti-rabbit IgG (red).Blue pseudocolor = DAPI (fluorescent DNA dye).