

# MAGEH1 antibody

Catalog Number: 112453

## Product name

MAGEH1 antibody

IHC: 1:20-1:200

IF: 1:50-1:500

## Specificity

Human, Mouse, Rat; other species not tested.

## Antibody description

MAGEH1 Rabbit Polyclonal antibody. Positive WB detected in Y79 cells, mouse brain tissue, PC-3 cells. Positive IHC detected in human prostate cancer tissue. Positive IF detected in PC-3 cells. Observed molecular weight by Western-blot: 28 kDa

## Preparation

This antibody was obtained by immunization of MAGEH1 recombinant protein (Accession Number: NM\_014061). Purification method: Antigen affinity purified.

## Formulation

PBS with 0.1% sodium azide and 50% glycerol pH 7.3.

## Storage

Store at -20°C. DO NOT ALIQUOT

## Clonality

Polyclonal

## Ig Type

Rabbit IgG

## Applications

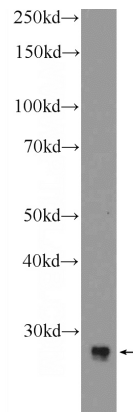
ELISA, WB, IHC, IF

## Dilutions

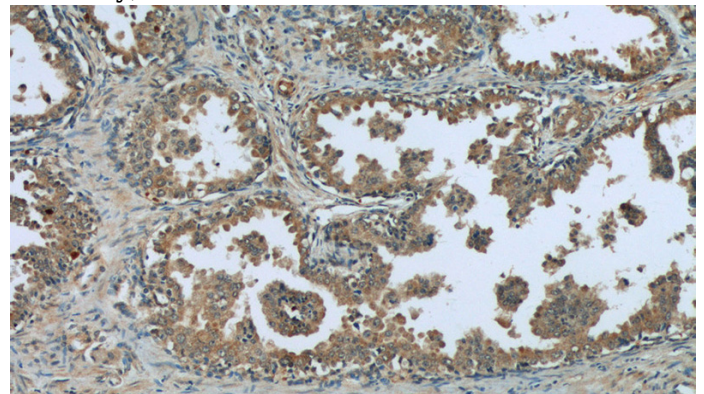
Recommended Dilution:

WB: 1:200-1:2000

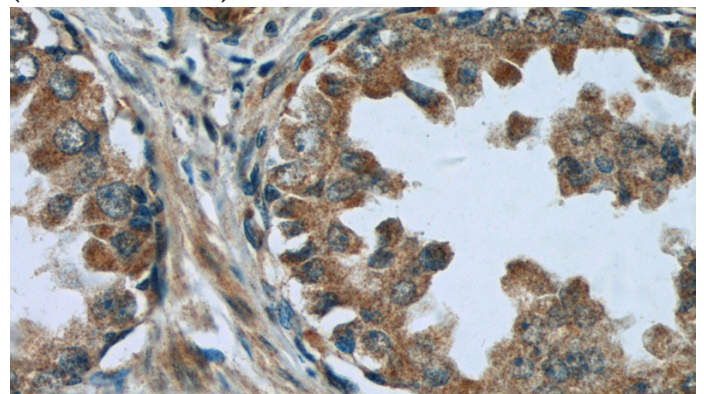
## Validations



Y79 cells were subjected to SDS PAGE followed by western blot with Catalog No:112453(MAGEH1 Antibody) at dilution of 1:600



Immunohistochemistry of paraffin-embedded human prostate cancer tissue slide using Catalog No:112453(MAGEH1 Antibody) at dilution of 1:50 (under 10x lens)



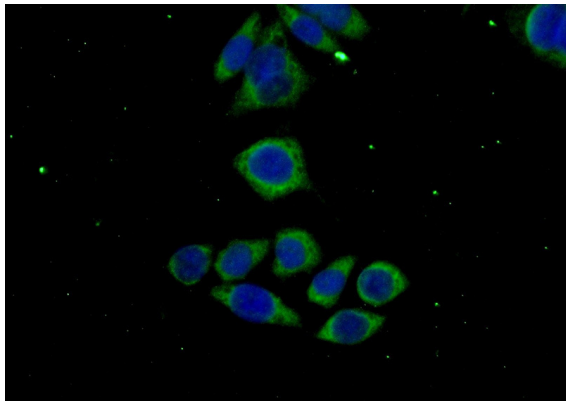
Immunohistochemistry of paraffin-embedded

# MAGEH1 antibody

Catalog Number: 112453

---

human prostate cancer tissue slide using Catalog No:112453(MAGEH1 Antibody) at dilution of 1:50 (under 40x lens)



Immunofluorescent analysis of (-20oc Ethanol) fixed PC-3 cells using Catalog No:112453(MAGEH1 Antibody) at dilution of 1:50 and Alexa Fluor 488-conjugated AffiniPure Goat Anti-Rabbit IgG(H+L)