

# MAP9 antibody



Catalog Number: 112429

## Product name

MAP9 antibody

## Specificity

Human; other species not tested.

## Antibody description

MAP9 Rabbit Polyclonal antibody. Positive WB detected in SH-SY5Y cells, HeLa cells, K-562 cells. Positive IF detected in HeLa cells. Observed molecular weight by Western-blot: 38-42 kDa

## Preparation

This antibody was obtained by immunization of MAP9 recombinant protein (Accession Number: XM\_011532254). Purification method: Antigen affinity purified.

## Formulation

PBS with 0.1% sodium azide and 50% glycerol pH 7.3.

## Storage

Store at -20°C. DO NOT ALIQUOT

## Clonality

Polyclonal

## Ig Type

Rabbit IgG

## Applications

ELISA, WB, IF

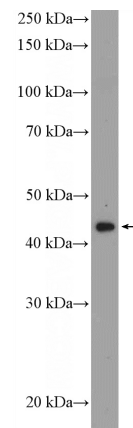
## Dilutions

Recommended Dilution:

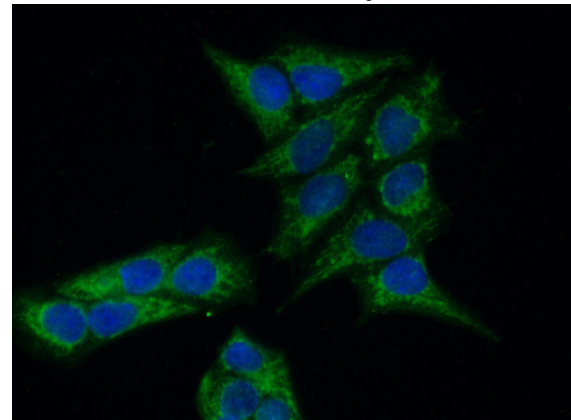
WB: 1:200-1:2000

IF: 1:50-1:500

## Validations



SH-SY5Y cells were subjected to SDS PAGE followed by western blot with Catalog No:112429(MAP9 Antibody) at dilution of 1:600



Immunofluorescent analysis of (-20oc Ethanol) fixed HeLa cells using Catalog No:112429(MAP9 Antibody) at dilution of 1:50 and Alexa Fluor 488-conjugated AffiniPure Goat Anti-Rabbit IgG(H+L)