

LYRM7 antibody



Catalog Number: 112412

Product name

LYRM7 antibody

Specificity

Human; other species not tested.

Antibody description

LYRM7 Rabbit Polyclonal antibody. Positive IHC detected in human liver tissue, human hepat°Cirrrosis tissue, human kidney tissue. Positive IF detected in HepG2 cells. Positive FC detected in HepG2 cells.

Preparation

This antibody was obtained by immunization of LYRM7 recombinant protein (Accession Number: NM_181705). Purification method: Antigen Affinity purified.

Formulation

PBS with 0.02% sodium azide and 50% glycerol pH 7.3.

Storage

Store at -20°C. DO NOT ALIQUOT

Clonality

Polyclonal

Ig Type

Rabbit IgG

Applications

ELISA, IHC, IF, FC

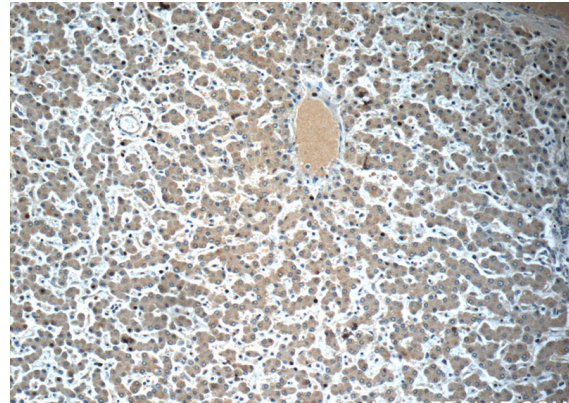
Dilutions

Recommended Dilution:

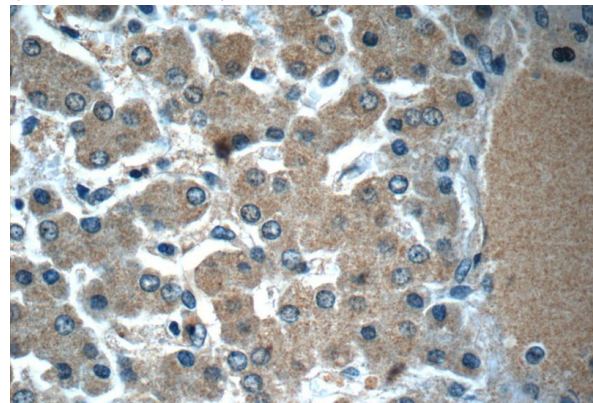
IHC: 1:20-1:200

IF: 1:10-1:100

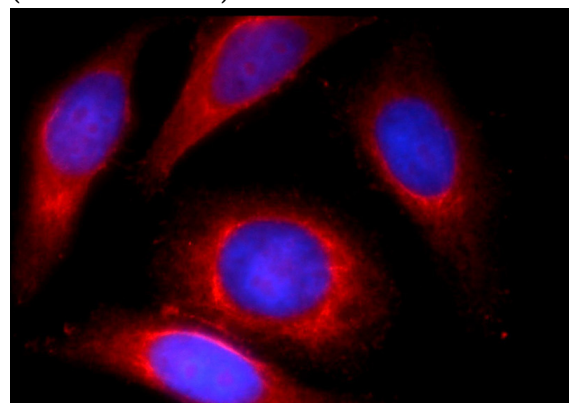
Validations



Immunohistochemistry of paraffin-embedded human liver slide using Catalog No:112412(LYRM7 Antibody) at dilution of 1:50 (under 10x lens)



Immunohistochemistry of paraffin-embedded human liver slide using Catalog No:112412(LYRM7 Antibody) at dilution of 1:50 (under 40x lens)



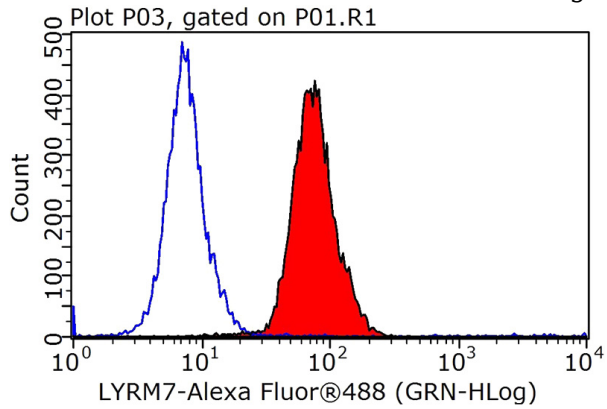
Immunofluorescent analysis of HepG2 cells using

LYRM7 antibody



Catalog Number: 112412

Catalog No:112412(LYRM7 Antibody) at dilution of 1:25 and Rhodamine-Goat anti-Rabbit IgG



1X10⁶ HepG2 cells were stained with .2ug LYRM7 antibody (Catalog No:112412, red) and control antibody (blue). Fixed with 90% MeOH blocked with 3% BSA (30 min). Alexa Fluor 488-conjugated AffiniPure Goat Anti-Rabbit IgG(H+L) with dilution 1:1000.