

# MAGEA6 antibody



Catalog Number: 112382

## Product name

MAGEA6 antibody

WB: 1:200-1:2000

IHC: 1:20-1:200

## Specificity

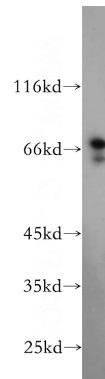
Human, Mouse; other species not tested.

IF: 1:10-1:100

## Antibody description

MAGEA6 Rabbit Polyclonal antibody. Positive WB detected in HepG2 cells, A375 cells, HeLa cells, MCF7 cells, mouse testis tissue. Positive IHC detected in human lung cancer tissue, human breast cancer tissue. Positive IF detected in A375 cells. Observed molecular weight by Western-blot: 66-70 kDa

## Validations



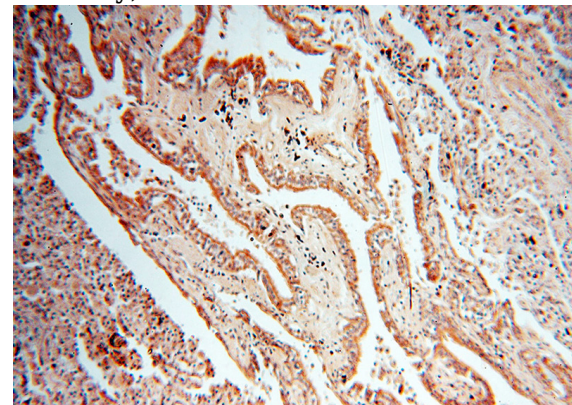
## Preparation

This antibody was obtained by immunization of MAGEA6 recombinant protein (Accession Number: NM\_175868). Purification method: Antigen affinity purified.

HepG2 cells were subjected to SDS PAGE followed by western blot with Catalog No:112382(MAGEA6 antibody) at dilution of 1:500

## Formulation

PBS with 0.02% sodium azide and 50% glycerol pH 7.3.



## Storage

Store at -20°C. DO NOT ALIQUOT

## Clonality

Polyclonal

Immunohistochemical of paraffin-embedded human lung cancer using Catalog No:112382(MAGEA6 antibody) at dilution of 1:50 (under 10x lens)

## Ig Type

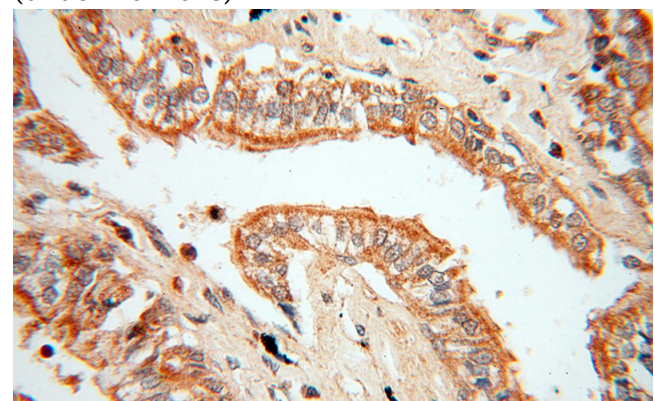
Rabbit IgG

## Applications

ELISA, WB, IHC, IF

## Dilutions

Recommended Dilution:



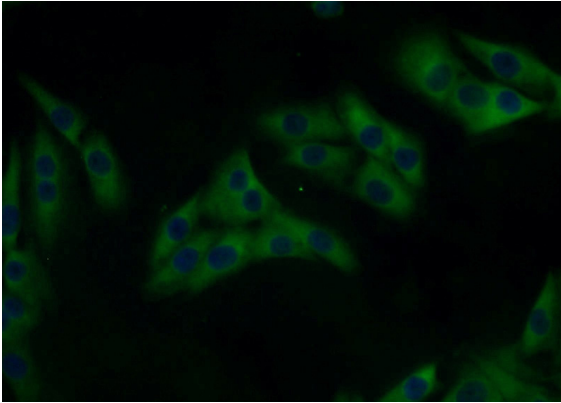
# MAGEA6 antibody



Catalog Number: 112382

---

Immunohistochemical of paraffin-embedded human lung cancer using Catalog No:112382(MAGEA6 antibody) at dilution of 1:50 (under 40x lens)



Immunofluorescent analysis of A375 cells using Catalog No:112382(MAGEA6 Antibody) at dilution of 1:25 and Alexa Fluor 488-conjugated AffiniPure Goat Anti-Rabbit IgG(H+L)