

# MACF1 antibody



Catalog Number: 112365

## Product name

MACF1 antibody

Recommended Dilution:

WB: 1:500-1:5000

## Immunogen

IHC: 1:20-1:200

[Human MACF1 Recombinant protein \(GST tag\)](#)

IF: N/A

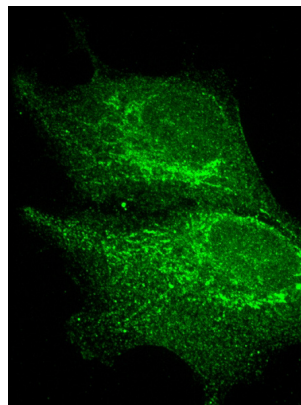
## Specificity

Human, Mouse, Rat; other species not tested.

## Validations

## Antibody description

MACF1 Rabbit Polyclonal antibody. Positive WB detected in Transfected HEK-293 cells. Positive IHC detected in human prostate cancer tissue, human heart tissue, human skeletal muscle tissue. Positive IF detected in RPE cells, NIH/3T3 cells.



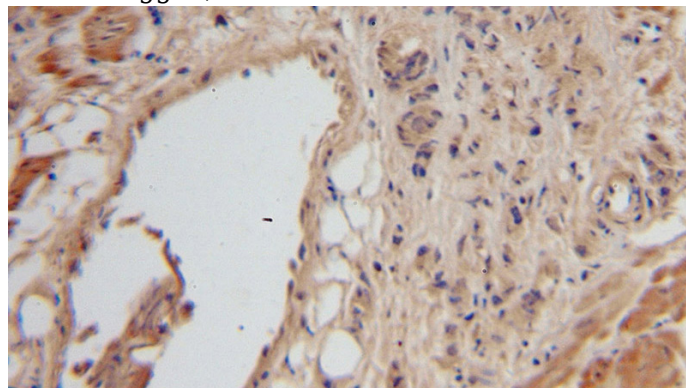
## Preparation

This antibody was obtained by immunization of MACF1 recombinant protein (Accession Number: BC007330). Purification method: Antigen affinity purified.

IF results (golgi stain) of MACF1 antibody (1:100) with RPE cells (fixed with 4% formaldehyde) by O'Neil Wiggan, Colorado State Univ.

## Formulation

PBS with 0.1% sodium azide and 50% glycerol pH 7.3.



## Storage

Store at -20°C. DO NOT ALIQUOT

## Clonality

Polyclonal

Immunohistochemical of paraffin-embedded human prostate cancer using Catalog No:112365(MACF1 antibody) at dilution of 1:100 (under 10x lens)

## Ig Type

Rabbit IgG

## Applications

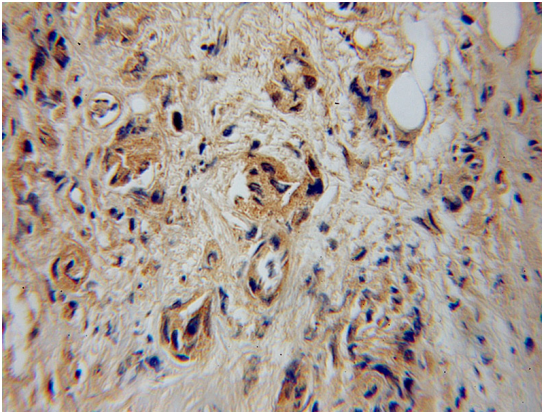
ELISA, IHC, IF, WB

## Dilutions

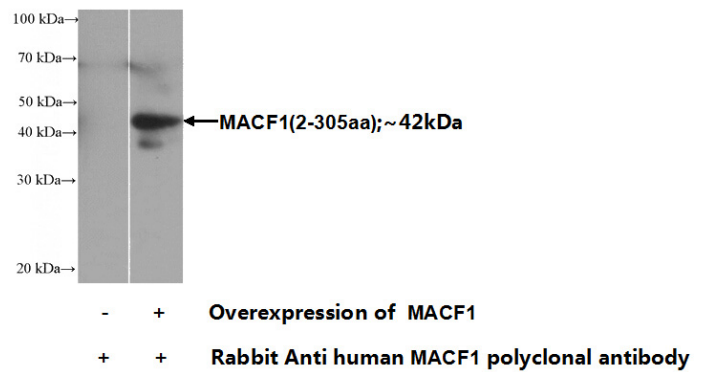
# MACF1 antibody



Catalog Number: 112365



(under 40x lens)



Immunohistochemical of paraffin-embedded human prostate cancer using Catalog No:112365(MACF1 antibody) at dilution of 1:100

Transfected HEK-293 cells were subjected to SDS PAGE followed by western blot with Catalog No:112365(MACF1 Antibody) at dilution of 1:1000