

# LSM14A antibody



Catalog Number: 112348

## Product name

LSM14A antibody

IHC: 1:20-1:200

IF: 1:20-1:200

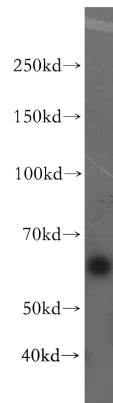
## Specificity

Human, Mouse, Rat; other species not tested.

## Antibody description

LSM14A Rabbit Polyclonal antibody. Positive WB detected in HepG2 cells, A549 cells, HeLa cells, PC-3 cells. Positive IF detected in HepG2 cells. Positive IHC detected in human testis tissue. Observed molecular weight by Western-blot: 60 kDa

## Validations



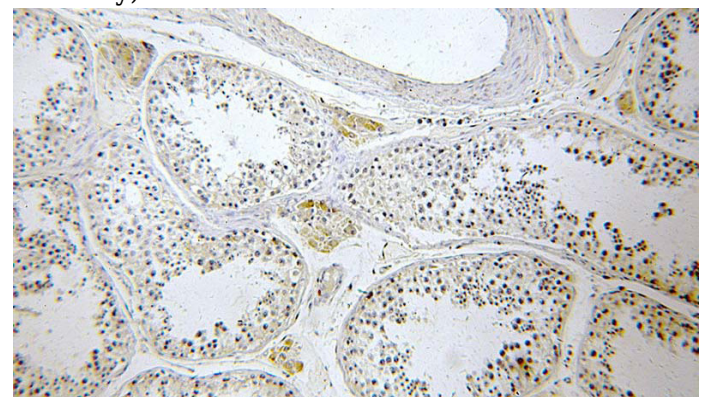
## Preparation

This antibody was obtained by immunization of LSM14A recombinant protein (Accession Number: NM\_015578). Purification method: Antigen affinity purified.

HepG2 cells were subjected to SDS PAGE followed by western blot with Catalog No:112348(LSM14A antibody) at dilution of 1:500

## Formulation

PBS with 0.02% sodium azide and 50% glycerol pH 7.3.



## Storage

Store at -20°C. DO NOT ALIQUOT

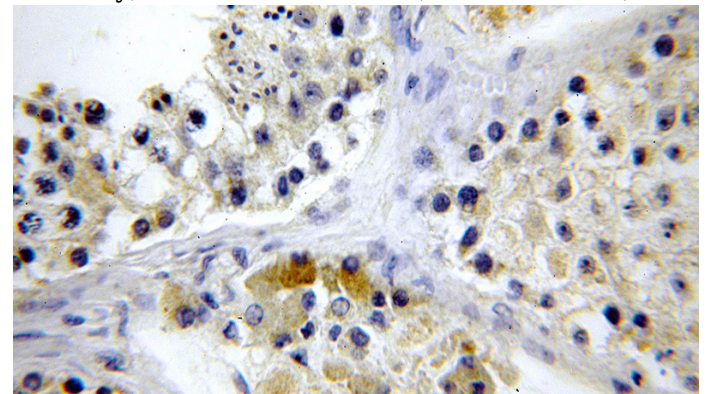
## Clonality

Polyclonal

Immunohistochemical of paraffin-embedded human testis using Catalog No:112348(LSM14A antibody) at dilution of 1:100 (under 10x lens)

## Ig Type

Rabbit IgG



## Applications

ELISA, WB, IHC, IF

## Dilutions

Recommended Dilution:

WB: 1:500-1:5000

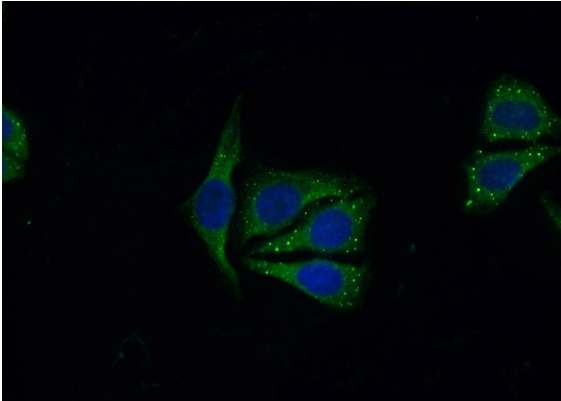
Immunohistochemical of paraffin-embedded human testis using Catalog No:112348(LSM14A

# LSM14A antibody

Catalog Number: 112348

---

antibody) at dilution of 1:100 (under 40x lens)



Immunofluorescent analysis of (10% Formaldehyde) fixed HepG2 cells using Catalog No:112348(LSM14A Antibody) at dilution of 1:50 and Alexa Fluor 488-conjugated AffiniPure Goat Anti-Rabbit IgG(H+L)