

LRSAM1 antibody



Catalog Number: 112341

Product name

LRSAM1 antibody

IHC: 1:20-1:200

IF: 1:10-1:100

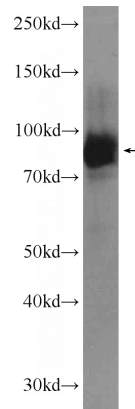
Specificity

Human, Mouse; other species not tested.

Validations

Antibody description

LRSAM1 Rabbit Polyclonal antibody. Positive WB detected in Jurkat cells, HepG2 cells, mouse liver tissue. Positive IHC detected in human skeletal muscle tissue. Positive IF detected in A431 cells. Observed molecular weight by Western-blot: 84 kDa



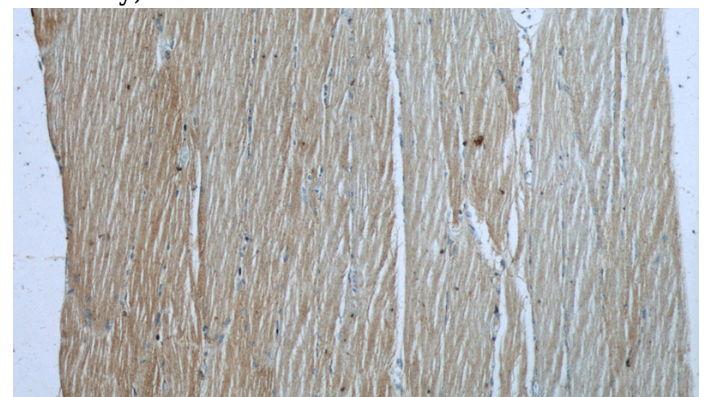
Preparation

This antibody was obtained by immunization of LRSAM1 recombinant protein (Accession Number: NM_138361). Purification method: Antigen affinity purified.

Jurkat cells were subjected to SDS PAGE followed by western blot with Catalog No:112341(LRSAM1 Antibody) at dilution of 1:1000

Formulation

PBS with 0.1% sodium azide and 50% glycerol pH 7.3.



Storage

Store at -20°C. DO NOT ALIQUOT

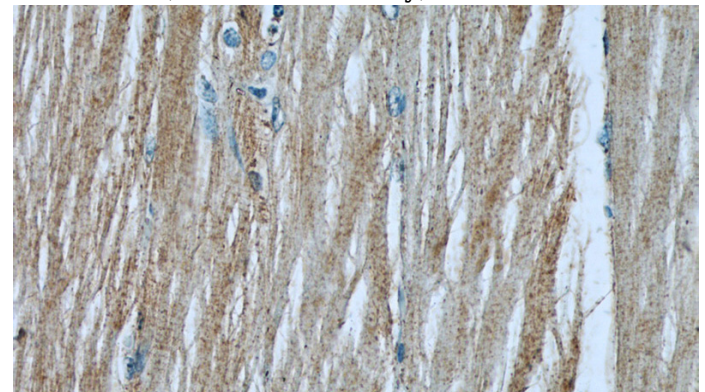
Clonality

Polyclonal

Immunohistochemistry of paraffin-embedded human skeletal muscle slide using Catalog No:112341(LRSAM1 Antibody) at dilution of 1:50

Ig Type

Rabbit IgG



Applications

ELISA, WB, IHC, IF

Dilutions

Recommended Dilution:

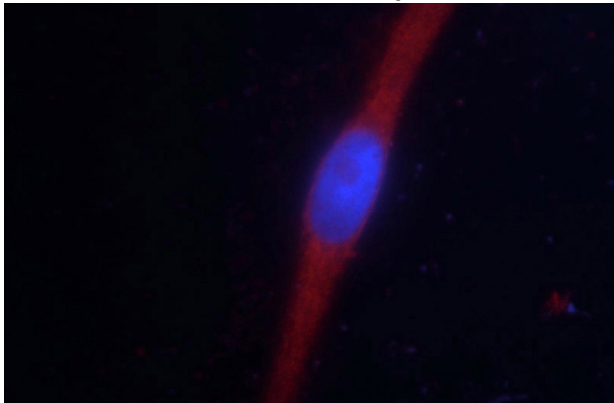
WB: 1:500-1:5000

Immunohistochemistry of paraffin-embedded human skeletal muscle slide using Catalog

LRSAM1 antibody

Catalog Number: 112341

No:112341(LRSAM1 Antibody) at dilution of 1:50



Immunofluorescent analysis of A431 cells using Catalog No:112341(LRSAM1 Antibody) at dilution of 1:25 and Rhodamine-Goat anti-Rabbit IgG