

LRRC52 antibody



Catalog Number: 112336

Product name

LRRC52 antibody

Immunogen

[Human LRRC52 Recombinant protein \(His tag\)](#)

Specificity

Human, Mouse; other species not tested.

Antibody description

LRRC52 Rabbit Polyclonal antibody. Positive WB detected in mouse skeletal muscle tissue. Observed molecular weight by Western-blot: 45 kDa

Preparation

This antibody was obtained by immunization of LRRC52 recombinant protein (Accession Number: NM_001005214). Purification method: Antigen affinity purified.

Formulation

PBS with 0.1% sodium azide and 50% glycerol pH 7.3.

Storage

Store at -20°C. DO NOT ALIQUOT

Clonality

Polyclonal

Ig Type

Rabbit IgG

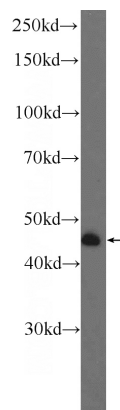
Applications

ELISA, WB

Dilutions

Recommended Dilution:
WB: 1:200-1:2000

Validations



mouse skeletal muscle tissue were subjected to SDS PAGE followed by western blot with Catalog No:112336(LRRC52 Antibody) at dilution of 1:600