

# LRRC29 antibody



Catalog Number: 112331

## Product name

LRRC29 antibody

## Specificity

Human, Mouse; other species not tested.

## Antibody description

LRRC29 Rabbit Polyclonal antibody. Positive WB detected in mouse liver tissue, mouse pancreas tissue. Observed molecular weight by Western-blot: 24 kDa

## Preparation

This antibody was obtained by immunization of LRRC29 recombinant protein (Accession Number: NM\_012163). Purification method: Antigen affinity purified.

## Formulation

PBS with 0.1% sodium azide and 50% glycerol pH 7.3.

## Storage

Store at -20°C. DO NOT ALIQUOT

## Clonality

Polyclonal

## Ig Type

Rabbit IgG

## Applications

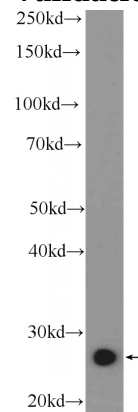
ELISA, WB

## Dilutions

Recommended Dilution:

WB: 1:200-1:1000

## Validations



mouse liver tissue were subjected to SDS PAGE followed by western blot with Catalog No:112331(LRRC29 Antibody) at dilution of 1:300