

# LRRC20 antibody



Catalog Number: 112330

## Product name

LRRC20 antibody

## Immunogen

[Human LRRC20 Recombinant protein \(His tag\)](#)

## Specificity

Human, Mouse; other species not tested.

## Antibody description

LRRC20 Rabbit Polyclonal antibody. Positive WB detected in NIH/3T3 cells, Y79 cells. Positive IF detected in NIH/3T3 cells. Positive IHC detected in human testis tissue, human colon tissue, human stomach cancer tissue. Observed molecular weight by Western-blot: 25 kDa

## Preparation

This antibody was obtained by immunization of LRRC20 recombinant protein (Accession Number: XM\_017016375). Purification method: Antigen affinity purified.

## Formulation

PBS with 0.1% sodium azide and 50% glycerol pH 7.3.

## Storage

Store at -20°C. DO NOT ALIQUOT

## Clonality

Polyclonal

## Ig Type

Rabbit IgG

## Applications

ELISA, WB, IHC, IF

## Dilutions

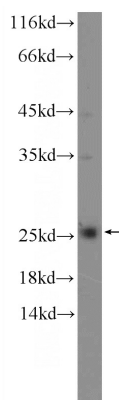
Recommended Dilution:

WB: 1:200-1:2000

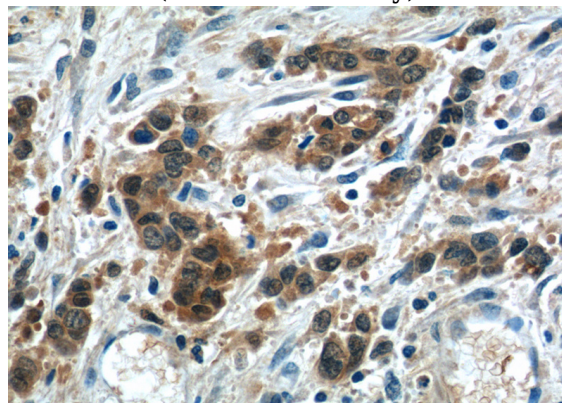
IHC: 1:20-1:200

IF: 1:50-1:500

## Validations



NIH/3T3 cells were subjected to SDS PAGE followed by western blot with Catalog No:112330(LRRC20 Antibody) at dilution of 1:600

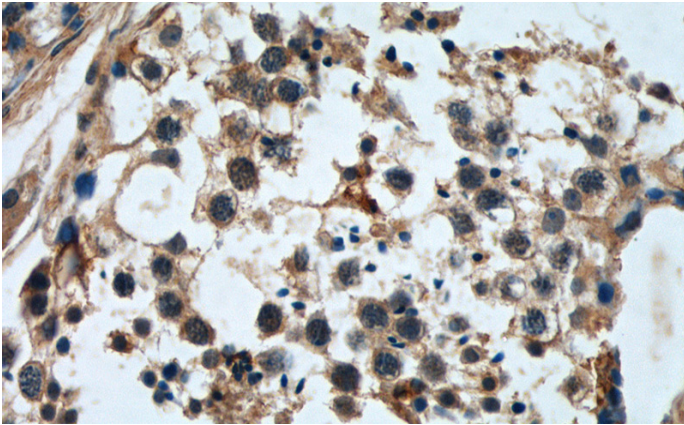


Immunohistochemistry of paraffin-embedded human stomach cancer tissue slide using Catalog No:112330(LRRC20 Antibody) at dilution of 1:50 (under 40x lens)

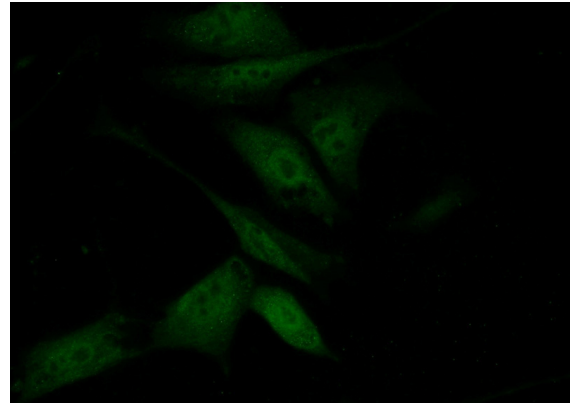
# LRRC20 antibody

Catalog Number: 112330

---



Immunohistochemistry of paraffin-embedded human testis tissue slide using Catalog No:112330(LRRC20 Antibody) at dilution of 1:50 (under 40x lens)



Immunofluorescent analysis of (10% Formaldehyde) fixed NIH/3T3 cells using Catalog No:112330(LRRC20 Antibody) at dilution of 1:50 and Alexa Fluor 488-conjugated AffiniPure Goat Anti-Rabbit IgG(H+L)