

# LRRC10 antibody



Catalog Number: 112328

## Product name

LRRC10 antibody

## Specificity

Human, Mouse, Rat; other species not tested.

## Antibody description

LRRC10 Rabbit Polyclonal antibody. Positive WB detected in mouse brain tissue, mouse stomach tissue. Observed molecular weight by Western-blot: 32 kDa

## Preparation

This antibody was obtained by immunization of LRRC10 recombinant protein (Accession Number: BC106893). Purification method: Antigen affinity purified.

## Formulation

PBS with 0.02% sodium azide and 50% glycerol pH 7.3.

## Storage

Store at -20°C. DO NOT ALIQUOT

## Clonality

Polyclonal

## Ig Type

Rabbit IgG

## Applications

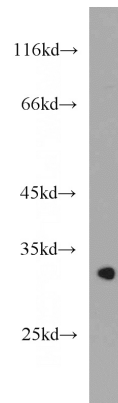
ELISA, WB

## Dilutions

Recommended Dilution:

WB: 1:1000-1:10000

## Validations



mouse brain tissue were subjected to SDS PAGE followed by western blot with Catalog No:112328(LRRC10 antibody) at dilution of 1:2000