

LRPPRC antibody



Catalog Number: 112325

Product name

LRPPRC antibody

Immunogen

[Human LRPPRC Recombinant protein \(GST tag\)](#)

Specificity

Human, Mouse, Rat; other species not tested.

Antibody description

LRPPRC Rabbit Polyclonal antibody. Positive IHC detected in human heart tissue, human kidney tissue. Positive IF detected in HepG2 cells, HEK-293 cells, Hela cells. Positive IP detected in HeLa cells. Positive WB detected in HepG2 cells, HeLa cells, mouse heart tissue, mouse kidney tissue, mouse liver tissue, mouse skeletal muscle tissue, rat kidney tissue, rat liver tissue. Observed molecular weight by Western-blot: 130 kDa

Preparation

This antibody was obtained by immunization of LRPPRC recombinant protein (Accession Number: NM_133259). Purification method: Antigen affinity purified.

Formulation

PBS with 0.02% sodium azide and 50% glycerol pH 7.3.

Storage

Store at -20°C. DO NOT ALIQUOT

Clonality

Polyclonal

Ig Type

Rabbit IgG

Applications

ELISA, WB, IHC, IF, IP

Dilutions

Recommended Dilution:

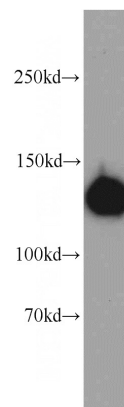
WB: 1:1000-1:10000

IP: 1:500-1:5000

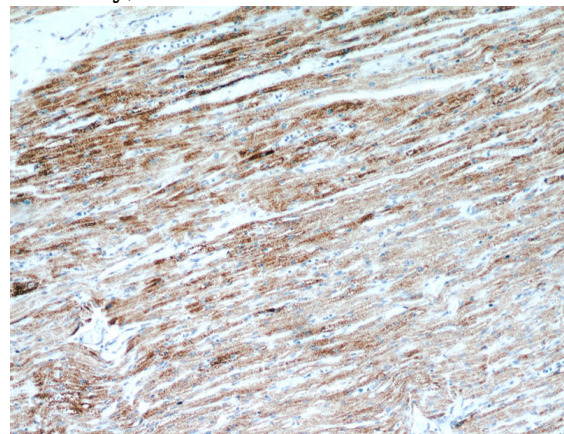
IHC: 1:20-1:200

IF: 1:10-1:100

Validations



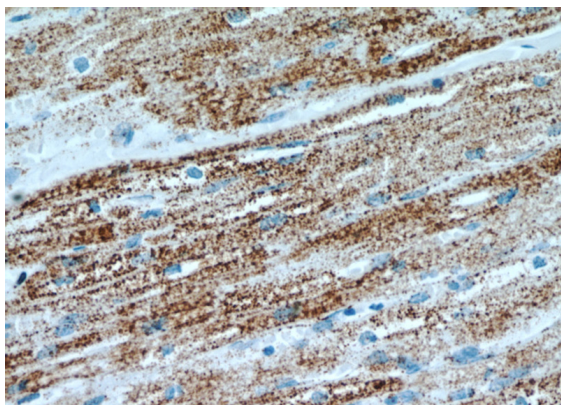
HepG2 cells were subjected to SDS PAGE followed by western blot with Catalog No:112325(LRPPRC antibody) at dilution of 1:500



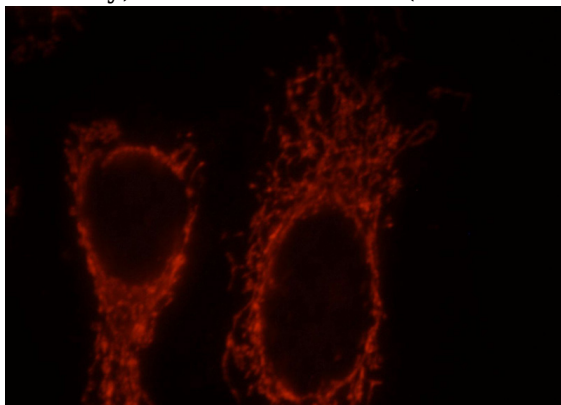
Immunohistochemical of paraffin-embedded human heart using Catalog No:112325(LRPPRC antibody) at dilution of 1:100 (under 10x lens)

LRPPRC antibody

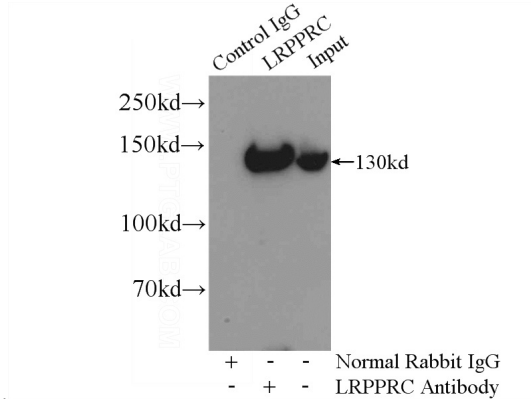
Catalog Number: 112325



Immunohistochemical of paraffin-embedded human heart using Catalog No:112325(LRPPRC antibody) at dilution of 1:100 (under 40x lens)



Immunofluorescent analysis of HepG2 cells, using LRPPRC antibody Catalog No:112325 at 1:25 dilution and Rhodamine-labeled goat anti-rabbit



IgG (red).

IP Result of anti-LRPPRC (IP:Catalog No:112325, 5ug; Detection:Catalog No:112325 1:1000) with HeLa cells lysate 1200ug.