

# LRCH3 antibody

Catalog Number: 112316

## Product name

LRCH3 antibody

WB: 1:500-1:5000

IP: 1:500-1:5000

## Specificity

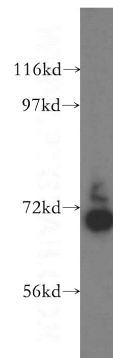
Human, Mouse, Rat; other species not tested.

IF: 1:10-1:100

## Antibody description

LRCH3 Rabbit Polyclonal antibody. Positive WB detected in human liver tissue, human heart tissue, human spleen tissue, Jurkat cells, mouse lung tissue. Positive IP detected in mouse liver tissue. Positive IF detected in A431 cells. Observed molecular weight by Western-blot: 70 kDa

## Validations



## Preparation

This antibody was obtained by immunization of LRCH3 recombinant protein (Accession Number: NM\_032773). Purification method: Antigen affinity purified.

human liver tissue were subjected to SDS PAGE followed by western blot with Catalog No:112316(LRCH3 antibody) at dilution of 1:500

## Formulation

PBS with 0.02% sodium azide and 50% glycerol pH 7.3.

## Storage

Store at -20°C. DO NOT ALIQUOT

## Clonality

Polyclonal

## Ig Type

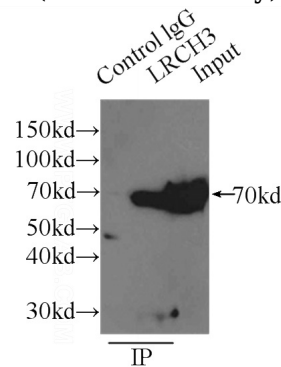
Rabbit IgG

## Applications

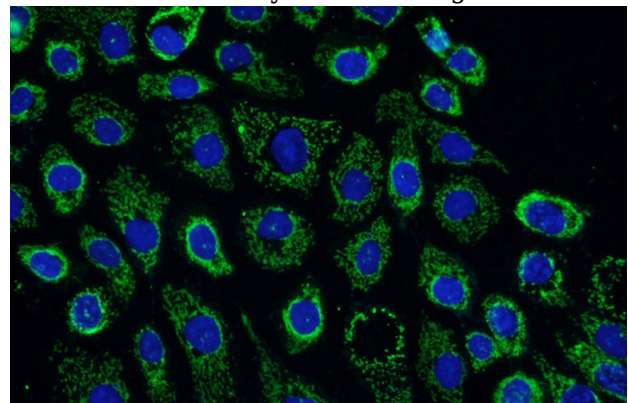
ELISA, WB, IP, IF

## Dilutions

Recommended Dilution:



IP Result of anti-LRCH3 (IP:Catalog No:112316, 3ug; Detection:Catalog No:112316 1:1000) with mouse liver tissue lysate 12500ug.



# LRCH3 antibody



Catalog Number: 112316

---

Immunofluorescent analysis of A431 cells using  
Catalog No:112316(LRCH3 Antibody) at dilution

of 1:25 and Alexa Fluor 488-conjugated AffiniPure  
Goat Anti-Rabbit IgG(H+L)