

LOC286135 antibody



Catalog Number: 112292

Product name

LOC286135 antibody

Specificity

Human, Mouse; other species not tested.

Antibody description

LOC286135 Rabbit Polyclonal antibody. Positive WB detected in mouse brain tissue. Positive IHC detected in human testis tissue, human liver tissue. Observed molecular weight by Western-blot: 18-20 kDa

Preparation

This antibody was obtained by immunization of L^oC286135 recombinant protein (Accession Number: BC126344). Purification method: Antigen affinity purified.

Formulation

PBS with 0.02% sodium azide and 50% glycerol pH 7.3.

Storage

Store at -20°C. DO NOT ALIQUOT

Clonality

Polyclonal

Ig Type

Rabbit IgG

Applications

ELISA, WB, IHC

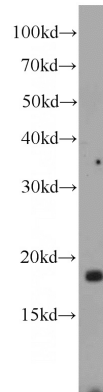
Dilutions

Recommended Dilution:

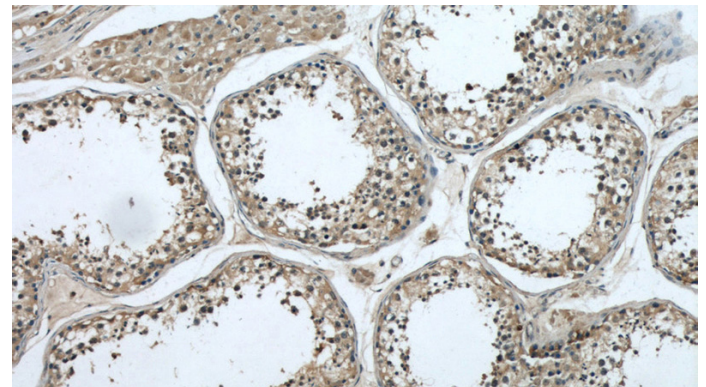
WB: 1:500-1:5000

IHC: 1:20-1:200

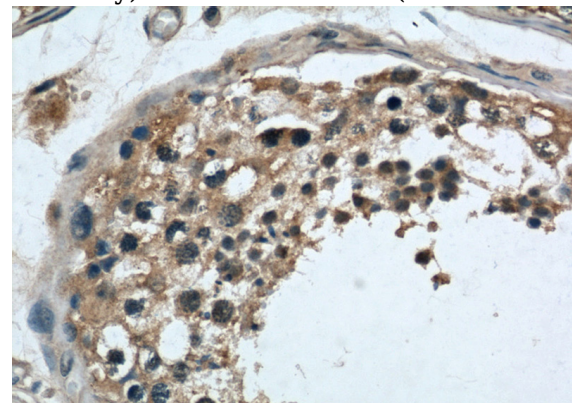
Validations



mouse brain tissue were subjected to SDS PAGE followed by western blot with Catalog No:112292(Loc286135 antibody) at dilution of 1:1000



Immunohistochemical of paraffin-embedded human testis using Catalog No:112292(Loc286135 antibody) at dilution of 1:50 (under 10x lens)



Immunohistochemical of paraffin-embedded human testis using Catalog No:112292(Loc286135 antibody) at dilution of 1:50 (under 40x lens)