

# LAMP1 antibody

Catalog Number: 112276

## Product name

LAMP1 antibody

IP: 1:500-1:5000

IHC: 1:20-1:200

## Specificity

Human, Mouse; other species not tested.

## Antibody description

LAMP1 Rabbit Polyclonal antibody. Positive IHC detected in human gliomas tissue, human pancreas tissue. Positive WB detected in RAW 264.7 cells. Positive IP detected in RAW 264.7 cells. Observed molecular weight by Western-blot: 120 kDa

## Preparation

This antibody was obtained by immunization of LAMP1 recombinant protein (Accession Number: NM\_005561). Purification method: Antigen affinity purified.

## Formulation

PBS with 0.02% sodium azide and 50% glycerol pH 7.3.

## Storage

Store at -20°C. DO NOT ALIQUOT

## Clonality

Polyclonal

## Ig Type

Rabbit IgG

## Applications

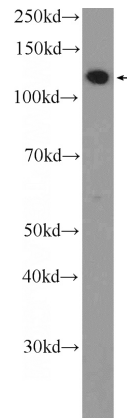
ELISA, WB, IHC, IP

## Dilutions

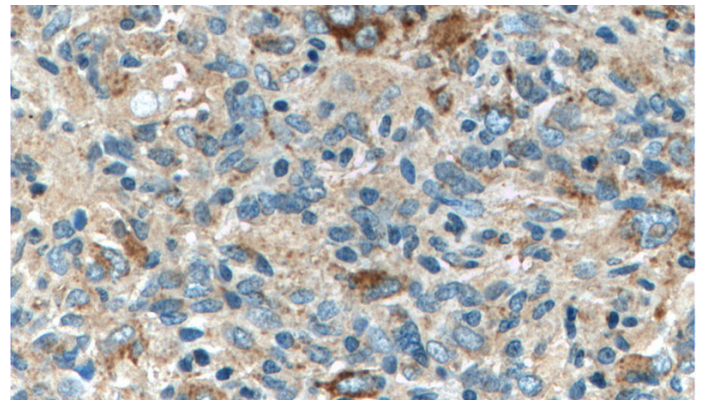
Recommended Dilution:

WB: 1:1000-1:10000

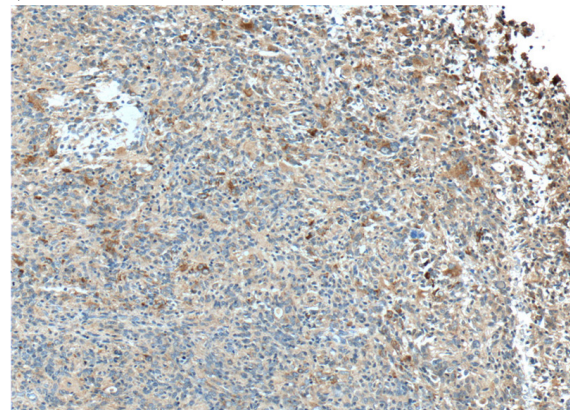
## Validations



RAW 264.7 cells were subjected to SDS PAGE followed by western blot with Catalog No:112276(CD107a Antibody) at dilution of 1:2000



Immunohistochemistry of paraffin-embedded human gliomas tissue slide using Catalog No:112276(CD107a Antibody) at dilution of 1:50 (under 40x lens)



# LAMP1 antibody

Catalog Number: 112276

---

Immunohistochemistry of paraffin-embedded human gliomas tissue slide using Catalog No:112276(CD107a Antibody) at dilution of 1:50

IP Result of anti-CD107a (IP:Catalog No:112276, 4ug; Detection:Catalog No:112276 1:1000) with RAW 264.7 cells lysate 1400ug.

