

Lamin B1 antibody



Catalog Number: 112274

General Information

Product name:

Lamin B1 antibody

Immunogen:

Applications:

ELISA, IHC, IF, IP, WB, FC

Specificity:

Human, Mouse, Rat; other species not tested.

Antibody description:

Lamin B1 Rabbit Polyclonal antibody. Positive WB detected in HeLa cells, HepG2 cells, human brain tissue, human kidney tissue, Jurkat cells, K-562 cells, mouse brain tissue, mouse eye tissue, mouse kidney tissue, mouse lung tissue, mouse pancreas tissue, mouse spleen tissue, NIH/3T3 cells, rat brain tissue, rat heart tissue, SH-SY5Y cells, U-937 cells, Y79 cells. Positive IP detected in HeLa cells. Positive FC detected in HEK-293 cells. Positive IHC detected in human breast cancer tissue, human kidney tissue. Positive IF detected in HepG2 cells. Observed molecular weight by Western-blot: 66 kDa

Properties

Preparation:

This antibody was obtained by immunization of Lamin B1 recombinant protein (Accession Number: BC012295). Purification method: Antigen affinity purified.

Formulation:

PBS with 0.1% sodium azide and 50% glycerol pH 7.3.

Storage:

Store at -20°C. DO NOT ALIQUOT

Clonality:

Polyclonal

Ig Type: Rabbit IgG

Applications

Recommended Dilution:

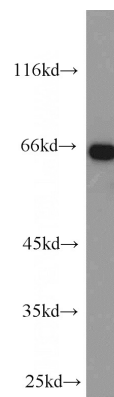
WB: 1:500-1:5000

IP: 1:500-1:5000

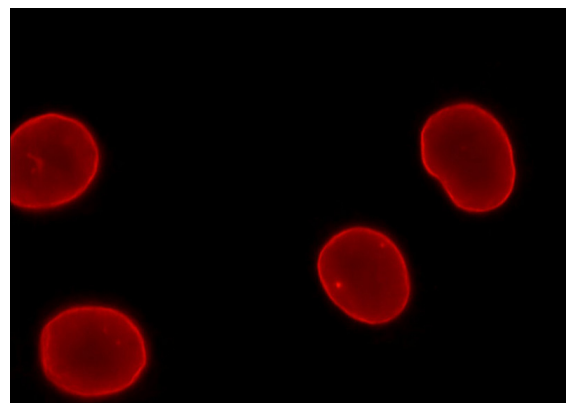
IHC: 1:20-1:200

IF: 1:20-1:200

Validations



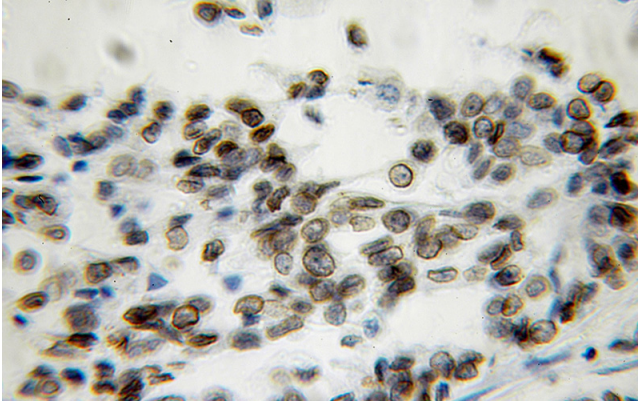
HeLa cells were subjected to SDS PAGE followed by western blot with Catalog No:117329(LMNB1 antibody) at dilution of 1:1000



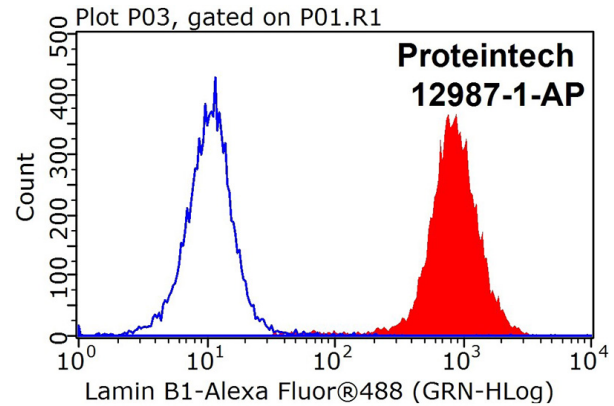
Lamin B1 antibody

Catalog Number: 112274

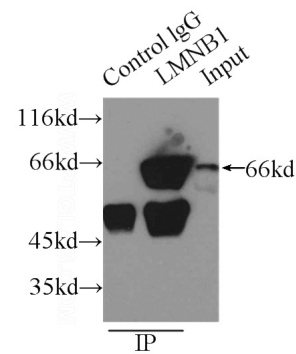
Immunofluorescent analysis of HepG2 cells, using LMNB1 antibody Catalog No:117329 at 1:50 dilution and Rhodamine-labeled goat anti-rabbit IgG (red).



Immunohistochemical of paraffin-embedded human breast cancer using Catalog No:117329(LMNB1 antibody) at dilution of 1:100 (under 10x lens)



1X10⁶ HEK-293 cells were stained with 0.2ug Lamin B1 antibody (Catalog No:117329, red) and control antibody (blue). Fixed with 90% MeOH blocked with 3% BSA (30 min). FITC-Goat anti-Rabbit IgG with dilution 1:100.



IP Result of anti-LMNB1 (IP:Catalog No:117329, 3ug; Detection:Catalog No:117329 1:1000) with HeLa cells lysate 2500ug.