

LAMA4 antibody

Catalog Number: 112269

Product name

LAMA4 antibody

Specificity

Human; other species not tested.

Antibody description

LAMA4 Rabbit Polyclonal antibody. Positive IHC detected in human ovary tissue. Positive WB detected in human heart tissue, human skeletal muscle tissue. Observed molecular weight by Western-blot: 11-13 kDa

Preparation

This antibody was obtained by immunization of LAMA4 recombinant protein (Accession Number: NM_001105209). Purification method: Antigen affinity purified.

Formulation

PBS with 0.1% sodium azide and 50% glycerol pH 7.3.

Storage

Store at -20°C. DO NOT ALIQUOT

Clonality

Polyclonal

Ig Type

Rabbit IgG

Applications

ELISA, WB, IHC

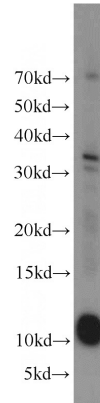
Dilutions

Recommended Dilution:

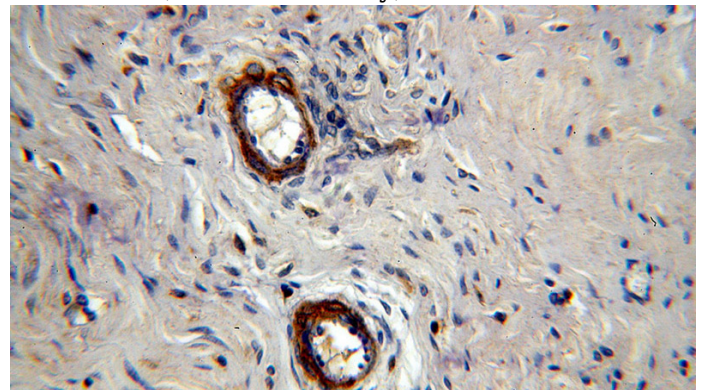
WB: 1:200-1:2000

IHC: 1:20-1:200

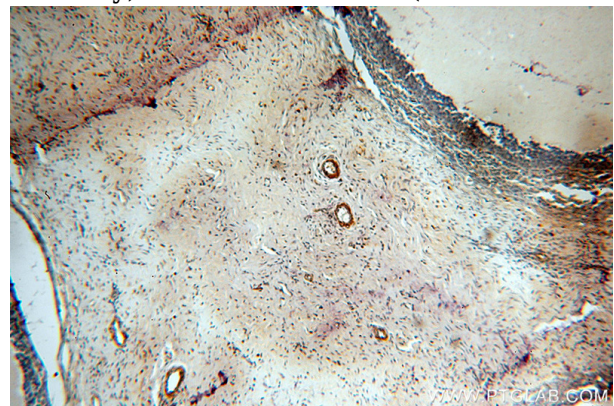
Validations



human heart tissue were subjected to SDS PAGE followed by western blot with Catalog No:112269(LAMA4 antibody) at dilution of 1:1000



Immunohistochemical of paraffin-embedded human ovary using Catalog No:112269(LAMA4 antibody) at dilution of 1:100 (under 40x lens)



Immunohistochemical of paraffin-embedded human ovary using Catalog No:112269(LAMA4 antibody) at dilution of 1:100 (under 10x lens)