

# LMBR1L antibody

Catalog Number: 112252

## Product name

LMBR1L antibody

## Specificity

Human, Mouse, Rat; other species not tested.

## Antibody description

LMBR1L Rabbit Polyclonal antibody. Positive FC detected in A549 cells. Positive WB detected in mouse testis tissue, A549 cells, HepG2 cells, mouse liver tissue, rat testis tissue. Positive IP detected in HepG2 cells. Observed molecular weight by Western-blot: 57 kDa

## Preparation

This antibody was obtained by immunization of LMBR1L recombinant protein (Accession Number: NM\_018113). Purification method: Antigen affinity purified.

## Formulation

PBS with 0.1% sodium azide and 50% glycerol pH 7.3.

## Storage

Store at -20°C. DO NOT ALIQUOT

## Clonality

Polyclonal

## Ig Type

Rabbit IgG

## Applications

ELISA, IP, WB, FC

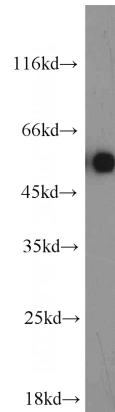
## Dilutions

Recommended Dilution:

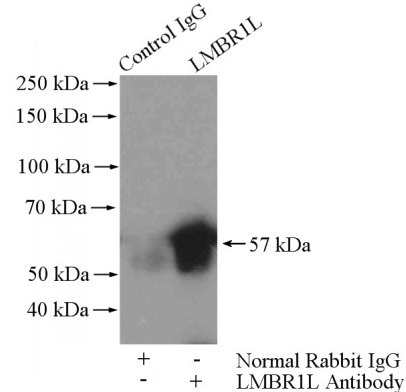
WB: 1:200-1:2000

IP: 1:200-1:2000

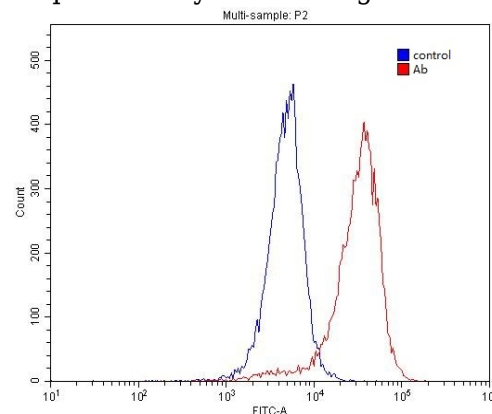
## Validations



mouse testis tissue were subjected to SDS PAGE followed by western blot with Catalog No:112252(LMBR1L antibody) at dilution of 1:600



IP Result of anti-LMBR1L (IP:Catalog No:112252, 4ug; Detection:Catalog No:112252 1:500) with HepG2 cells lysate 3200ug.



1X10<sup>6</sup> A549 cells were stained with 0.2ug LMBR1L antibody (Catalog No:112252, red) and control antibody (blue). Fixed with 4% PFA

# LMBR1L antibody



Catalog Number: 112252

---

blocked with 3% BSA (30 min). Alexa Fluor 488-

conjugated AffiniPure Goat Anti-Rabbit IgG(H+L)  
with dilution 1:1500.