

LMAN1 antibody

Catalog Number: 112250

Product name

LMAN1 antibody

WB: 1:500-1:5000

IP: 1:200-1:1000

Specificity

Human, Mouse, Rat; other species not tested.

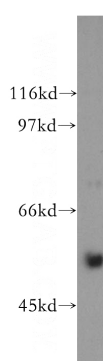
IHC: 1:20-1:200

IF: 1:20-1:200

Antibody description

LMAN1 Rabbit Polyclonal antibody. Positive WB detected in human brain tissue, HepG2 cells, MCF7 cells, mouse brain tissue. Positive IP detected in HepG2 cells. Positive IF detected in A549 cells. Positive IHC detected in human stomach cancer tissue. Observed molecular weight by Western-blot: 54 kDa

Validations



Preparation

This antibody was obtained by immunization of LMAN1 recombinant protein (Accession Number: NM_005570). Purification method: Antigen affinity purified.

human brain tissue were subjected to SDS PAGE followed by western blot with Catalog No:112250(LMAN1 antibody) at dilution of 1:400

Formulation

PBS with 0.02% sodium azide and 50% glycerol pH 7.3.

Storage

Store at -20°C. DO NOT ALIQUOT

Clonality

Polyclonal

Ig Type

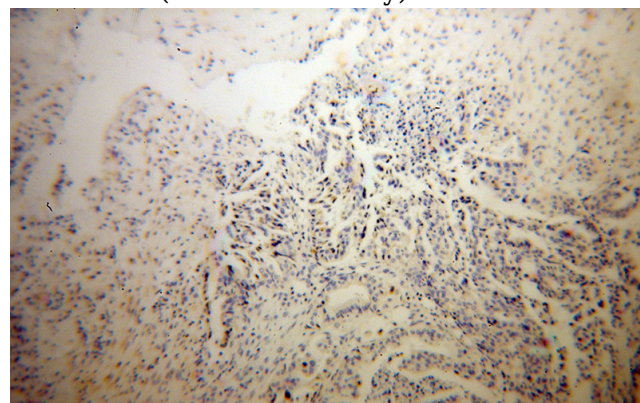
Rabbit IgG

Applications

ELISA, WB, IHC, IP, IF

Dilutions

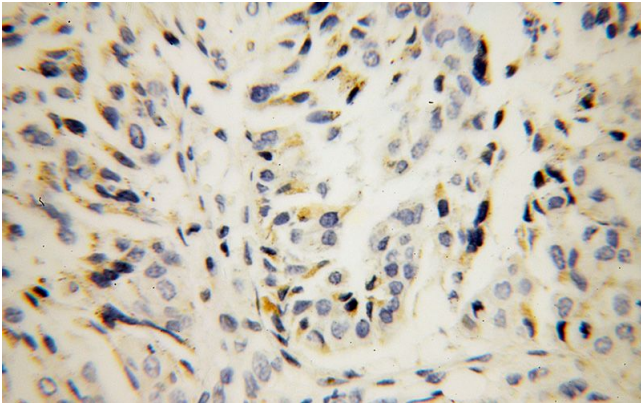
Recommended Dilution:



Immunohistochemical of paraffin-embedded human stomach cancer using Catalog No:112250(LMAN1 antibody) at dilution of 1:100 (under 10x lens)

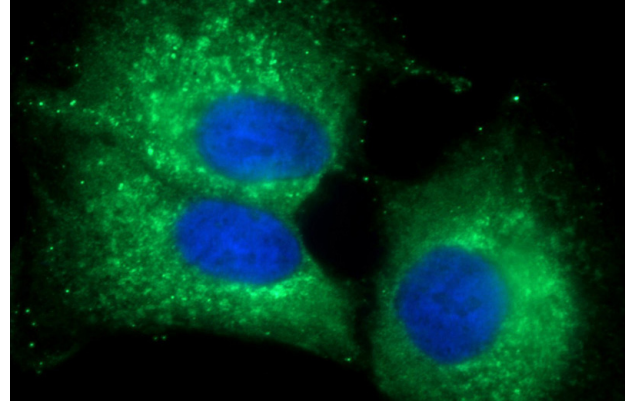
LMAN1 antibody

Catalog Number: 112250

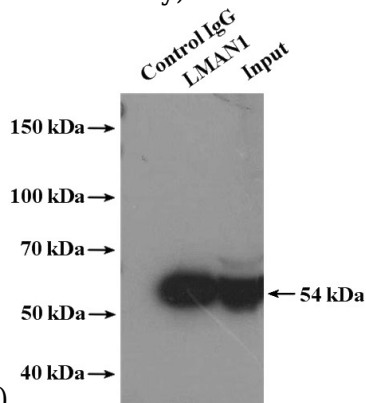


Immunohistochemical of paraffin-embedded human stomach cancer using Catalog No:112250(LMAN1 antibody) at dilution of 1:100

IP Result of anti-LMAN1 (IP:Catalog No:112250, 4ug; Detection:Catalog No:112250 1:400) with HepG2 cells lysate 1000ug.



Immunofluorescent analysis of (-20oc Ethanol) fixed A549 cells using Catalog No:112250(LMAN1 Antibody) at dilution of 1:50 and Alexa Fluor 488-conjugated AffiniPure Goat Anti-Rabbit IgG(H+L)



(under 40x lens)