

# LKB1 antibody

Catalog Number: 112249

## Product name

LKB1 antibody

WB: 1:200-1:2000

IP: 1:200-1:2000

## Specificity

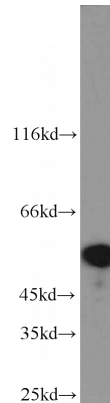
Human, Mouse, Rat; other species not tested.

IHC: 1:20-1:200

## Antibody description

LKB1 Rabbit Polyclonal antibody. Positive IP detected in HEK-293 cells. Positive WB detected in HEK-293 cells, Jurkat cells. Positive IHC detected in human lymphoma tissue, human liver tissue, human lung cancer tissue, human skin tissue, human testis tissue. Observed molecular weight by Western-blot: 54 kDa

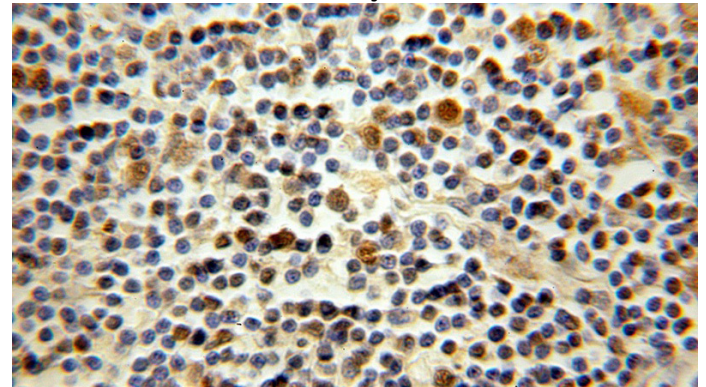
## Validations



## Preparation

This antibody was obtained by immunization of LKB1 recombinant protein (Accession Number: NM\_000455). Purification method: Antigen affinity purified.

HEK-293 cells were subjected to SDS PAGE followed by western blot with Catalog No:112249(STK11 antibody) at dilution of 1:600



## Formulation

PBS with 0.1% sodium azide and 50% glycerol pH 7.3.

## Storage

Store at -20°C. DO NOT ALIQUOT

## Clonality

Polyclonal

## Ig Type

Rabbit IgG

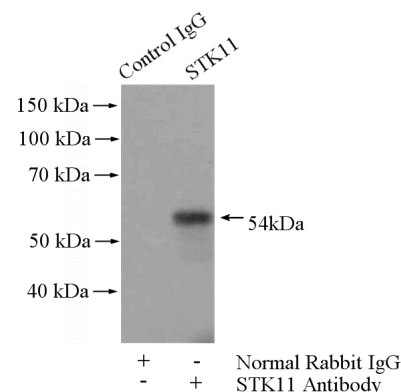
## Applications

ELISA, WB, IHC, IP

## Dilutions

Recommended Dilution:

Immunohistochemical of paraffin-embedded human lymphoma using Catalog No:112249(STK11 antibody) at dilution of 1:50 (under 10x lens)



# LKB1 antibody



Catalog Number: 112249

---

IP Result of anti-STK11 (IP:Catalog No:112249,

4ug; Detection:Catalog No:112249 1:500) with  
HEK-293 cells lysate 2000ug.