

# LITAF antibody



Catalog Number: 112246

## Product name

LITAF antibody

## Immunogen

[Human LITAF Recombinant protein \(GST tag\)](#)

## Specificity

Human, Mouse, Rat; other species not tested.

## Antibody description

LITAF Rabbit Polyclonal antibody. Positive IHC detected in human spleen tissue. Positive WB detected in HeLa cells, HepG2 cells. Positive IP detected in HeLa cells. Observed molecular weight by Western-blot: 24 kDa

## Preparation

This antibody was obtained by immunization of LITAF recombinant protein (Accession Number: NM\_004862). Purification method: Antigen affinity purified.

## Formulation

PBS with 0.02% sodium azide and 50% glycerol pH 7.3.

## Storage

Store at -20°C. DO NOT ALIQUOT

## Clonality

Polyclonal

## Ig Type

Rabbit IgG

## Applications

ELISA, WB, IHC, IP

## Dilutions

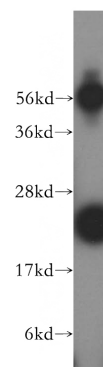
Recommended Dilution:

WB: 1:500-1:5000

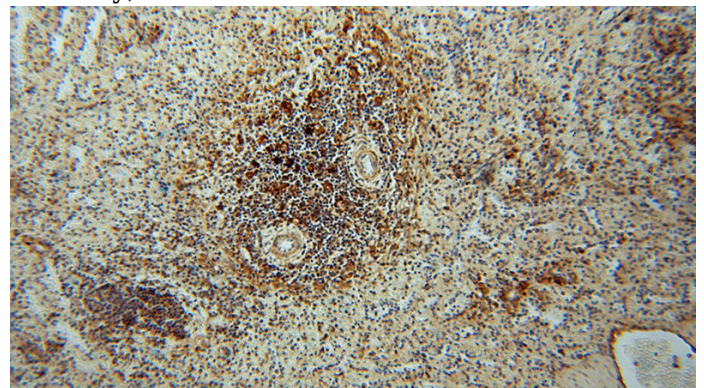
IP: 1:200-1:2000

IHC: 1:20-1:200

## Validations



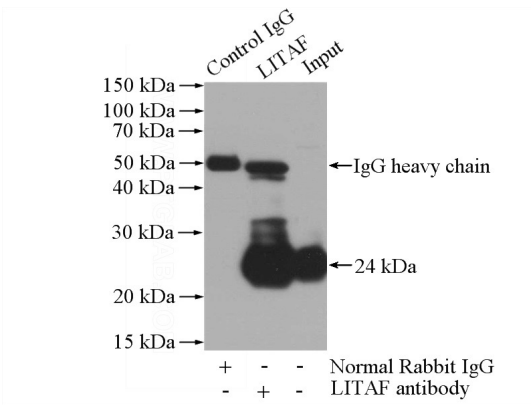
HeLa cells were subjected to SDS PAGE followed by western blot with Catalog No:112246(LITAF antibody) at dilution of 1:500



Immunohistochemical of paraffin-embedded human spleen using Catalog No:112246(LITAF antibody) at dilution of 1:100 (under 10x lens)

# LITAF antibody

Catalog Number: 112246



IP Result of anti-LITAF (IP:Catalog No:112246, 4ug; Detection:Catalog No:112246 1:600) with HeLa cells lysate 1520ug.