

# LIPA antibody

Catalog Number: 112241

## Product name

LIPA antibody

## Specificity

Human, Mouse, Rat; other species not tested.

## Antibody description

LIPA Rabbit Polyclonal antibody. Positive IHC detected in human colon cancer tissue. Positive WB detected in Y79 cells, HEK-293 cells, HeLa cells, HepG2 cells, HT-1080 cells. Observed molecular weight by Western-blot: 45kd

## Preparation

This antibody was obtained by immunization of LIPA recombinant protein (Accession Number: NM\_000235). Purification method: Antigen affinity purified.

## Formulation

PBS with 0.1% sodium azide and 50% glycerol pH 7.3.

## Storage

Store at -20°C. DO NOT ALIQUOT

## Clonality

Polyclonal

## Ig Type

Rabbit IgG

## Applications

ELISA, WB, IHC

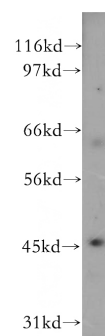
## Dilutions

Recommended Dilution:

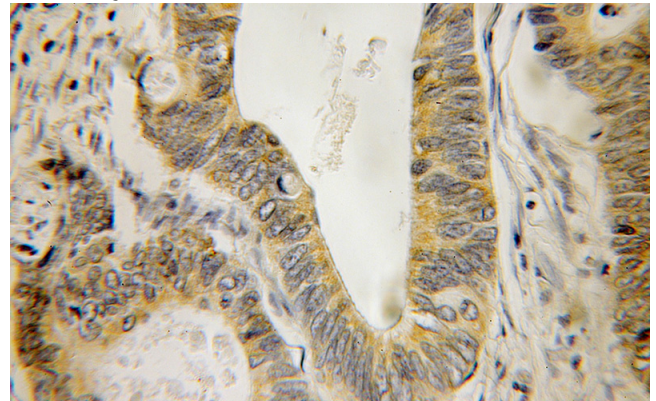
WB: 1:200-1:2000

IHC: 1:20-1:200

## Validations



Y79 cells were subjected to SDS PAGE followed by western blot with Catalog No:112241(LIPA antibody) at dilution of 1:400



Immunohistochemical of paraffin-embedded human colon cancer using Catalog No:112241(LIPA antibody) at dilution of 1:100 (under 10x lens)