

# LIMS1 antibody

Catalog Number: 112230

## Product name

LIMS1 antibody

IHC: 1:20-1:200

IF: 1:10-1:100

## Specificity

Human, Mouse, Rat; other species not tested.

## Antibody description

LIMS1 Rabbit Polyclonal antibody. Positive WB detected in human kidney tissue, mouse lung tissue. Positive IF detected in HeLa cells. Positive IHC detected in human oesophagus cancer tissue. Positive FC detected in HeLa cells. Observed molecular weight by Western-blot: 35-37kd

## Preparation

This antibody was obtained by immunization of LIMS1 recombinant protein (Accession Number: NM\_001193488). Purification method: Antigen affinity purified.

## Formulation

PBS with 0.02% sodium azide and 50% glycerol pH 7.3.

## Storage

Store at -20°C. DO NOT ALIQUOT

## Clonality

Polyclonal

## Ig Type

Rabbit IgG

## Applications

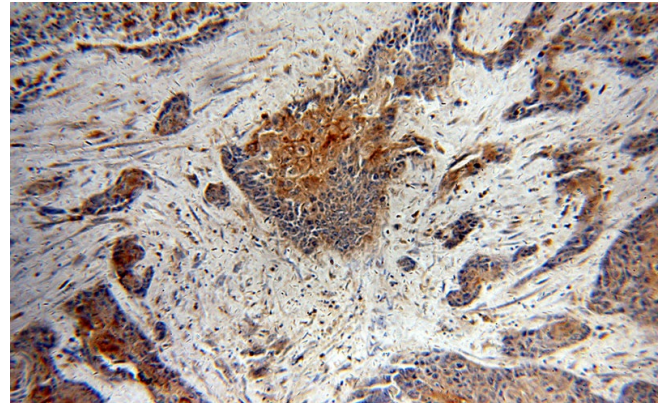
ELISA, WB, IF, IHC, FC


## Dilutions

Recommended Dilution:

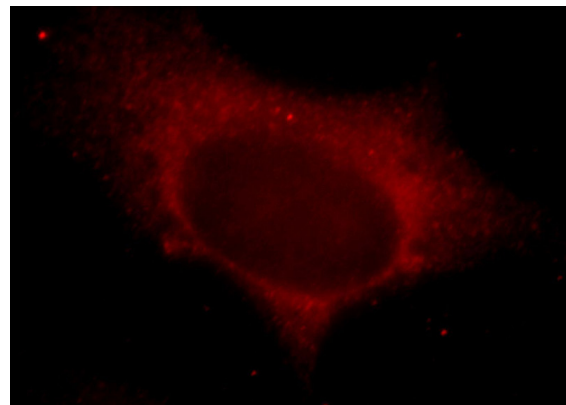
WB: 1:200-1:2000

## Validations



Immunohistochemical of paraffin-embedded human oesophagus cancer using Catalog No:112230(LIMS1 antibody) at dilution of 1:50 (under 10x lens) 

1X10<sup>6</sup> HeLa cells were stained with 0.2ug LIMS1 antibody (Catalog No:112230, red) and control antibody (blue). Fixed with 90% MeOH blocked with 3% BSA (30 min). Alexa Fluor 488-conjugated AffiniPure Goat Anti-Rabbit IgG(H+L) with dilution 1:1000.

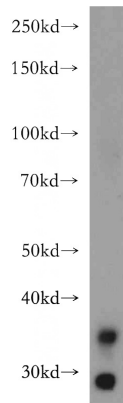


Immunofluorescent analysis of HeLa cells, using LIMS1 antibody Catalog No:112230 at 1:25 dilution and Rhodamine-labeled goat anti-rabbit

# LIMS1 antibody

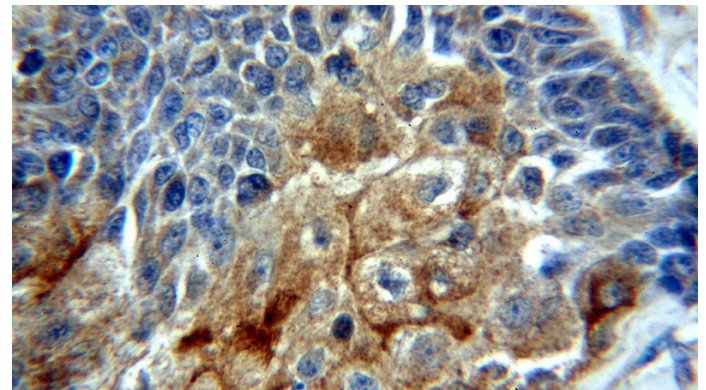
Catalog Number: 112230

---



IgG (red).

human kidney tissue were subjected to SDS PAGE followed by western blot with Catalog No:112230(LIMS1 antibody) at dilution of 1:400



Immunohistochemical of paraffin-embedded human oesophagus cancer using Catalog No:112230(LIMS1 antibody) at dilution of 1:50 (under 40x lens)