

# LIMK1 antibody

Catalog Number: 112228

## Product name

LIMK1 antibody

## Specificity

Human, Mouse, Rat; other species not tested.

## Antibody description

LIMK1 Rabbit Polyclonal antibody. Positive IHC detected in human heart tissue, human brain tissue. Positive IP detected in HeLa cells. Positive WB detected in HeLa cells. Observed molecular weight by Western-blot: 73 kDa, 33 kDa

## Preparation

This antibody was obtained by immunization of Peptide (Accession Number: NM\_002314). Purification method: Antigen affinity purified.

## Formulation

PBS with 0.02% sodium azide and 50% glycerol pH 7.3.

## Storage

Store at -20°C. DO NOT ALIQUOT

## Clonality

Polyclonal

## Ig Type

Rabbit IgG

## Applications

ELISA, WB, IHC, IP

## Dilutions

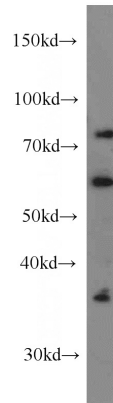
Recommended Dilution:

WB: 1:200-1:2000

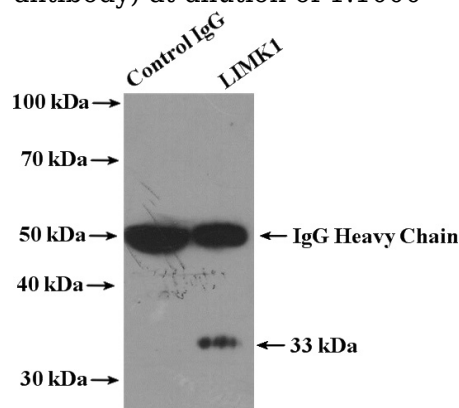
IP: 1:200-1:2000

IHC: 1:20-1:200

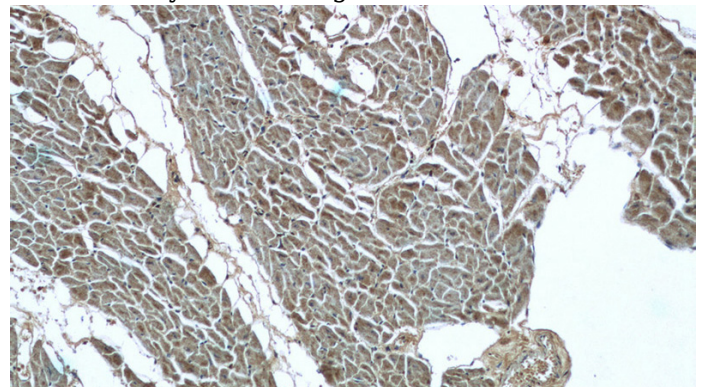
## Validations



HeLa cells were subjected to SDS PAGE followed by western blot with Catalog No:112228(LIMK1 antibody) at dilution of 1:1000



IP Result of anti-LIMK1 (IP:Catalog No:112228, 4ug; Detection:Catalog No:112228 1:800) with HeLa cells lysate 1600ug.

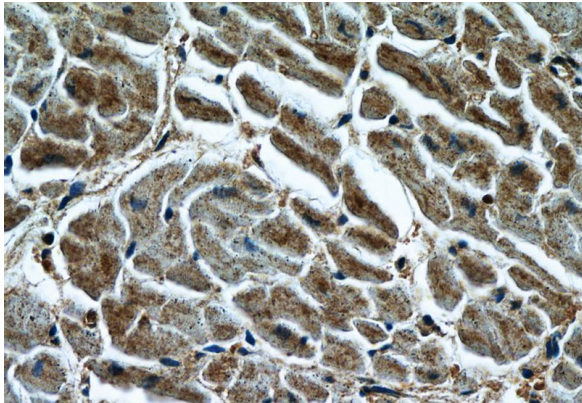


Immunohistochemistry of paraffin-embedded human heart tissue slide using Catalog No:112228(LIMK1 Antibody) at dilution of 1:200 (under 10x lens)

# LIMK1 antibody

Catalog Number: 112228

---



Immunohistochemistry of paraffin-embedded human heart tissue slide using Catalog No:112228(LIMK1 Antibody) at dilution of 1:200 (under 40x lens)