

LDHA antibody



Catalog Number: 112181

Product name

LDHA antibody

Recommended Dilution:

WB: 1:500-1:5000

Specificity

Human, Mouse, Rat; other species not tested.

IP: 1:200-1:2000

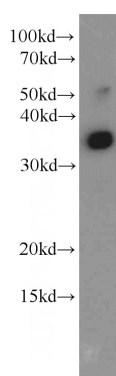
IHC: 1:20-1:200

Antibody description

LDHA Rabbit Polyclonal antibody. Positive IF detected in HepG2 cells. Positive IHC detected in human skeletal muscle tissue. Positive IP detected in HEK-293 cells. Positive WB detected in HeLa cells, A375 cells, HEK-293 cells, HepG2 cells, human testis tissue, MCF7 cells, NIH/3T3 cells. Observed molecular weight by Western-blot: 32-36 kDa

IF: 1:10-1:100

Validations



Preparation

This antibody was obtained by immunization of LDHA recombinant protein (Accession Number: NM_005566). Purification method: Antigen affinity purified.

HeLa cells were subjected to SDS PAGE followed by western blot with Catalog No:112181(LDHA antibody) at dilution of 1:500

Formulation

PBS with 0.1% sodium azide and 50% glycerol pH 7.3.

Storage

Store at -20°C. DO NOT ALIQUOT

Clonality

Polyclonal

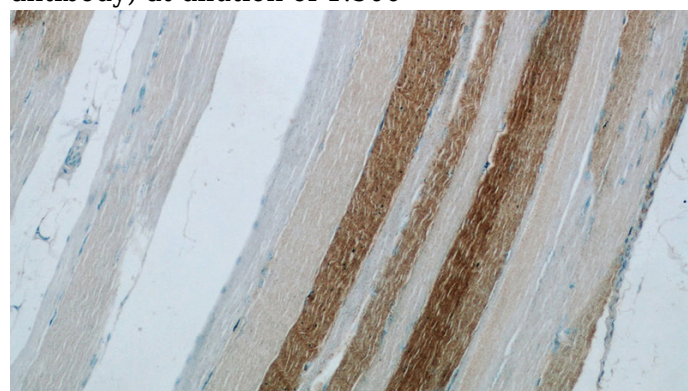
Ig Type

Rabbit IgG

Applications

ELISA, WB, IHC, IF, IP

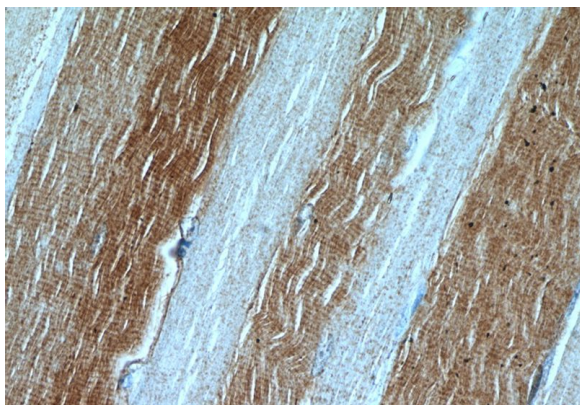
Dilutions



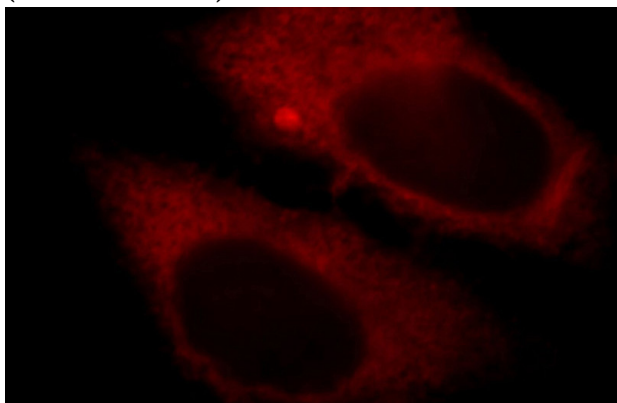
Immunohistochemical of paraffin-embedded human skeletal muscle using Catalog No:112181(LDHA antibody) at dilution of 1:50 (under 10x lens)

LDHA antibody

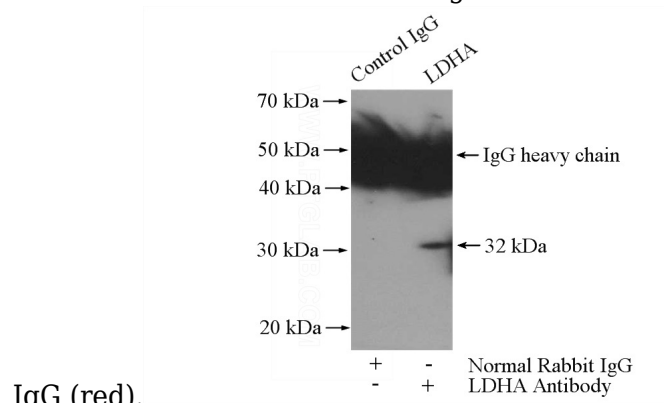
Catalog Number: 112181



Immunohistochemical of paraffin-embedded human skeletal muscle using Catalog No:112181(LDHA antibody) at dilution of 1:50 (under 40x lens)



Immunofluorescent analysis of HepG2 cells, using LDHA antibody Catalog No:112181 at 1:25 dilution and Rhodamine-labeled goat anti-rabbit



IgG (red).

IP Result of anti-LDHA (IP:Catalog No:112181, 4ug; Detection:Catalog No:112181 1:500) with HEK-293 cells lysate 2000ug.