

# KRT33B antibody

Catalog Number: 112130

## Product name

KRT33B antibody

## Specificity

human; other species not tested.

## Antibody description

KRT33B Rabbit Polyclonal antibody. Positive WB detected in MCF7 cells, human brain tissue. Positive IHC detected in human prostate cancer. Observed molecular weight by Western-blot: 46 kDa

## Preparation

This antibody was obtained by immunization of KRT33B recombinant protein (Accession Number: NM\_002279). Purification method: Antigen affinity purified.

## Formulation

PBS with 0.1% sodium azide and 50% glycerol pH 7.3.

## Storage

Store at -20°C. DO NOT ALIQUOT

## Clonality

Polyclonal

## Ig Type

Rabbit IgG

## Applications

ELISA, WB, IHC

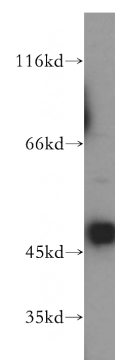
## Dilutions

Recommended Dilution:

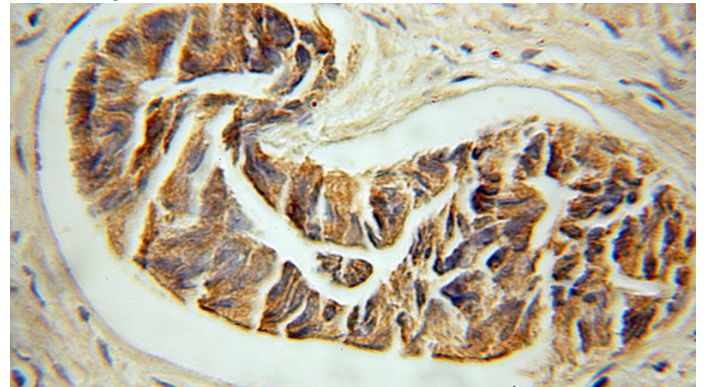
WB: 1:200-1:2000

IHC: 1:20-1:200

## Validations



MCF7 cells were subjected to SDS PAGE followed by western blot with Catalog No:112130(KRT33B antibody) at dilution of 1:800



Immunohistochemical of paraffin-embedded human prostate cancer using Catalog No:112130(KRT33B antibody) at dilution of 1:50 (under 10x lens)