

KRR1 antibody

Catalog Number: 112124

Product name

KRR1 antibody

Specificity

human, mouse, rat; other species not tested.

Antibody description

KRR1 Rabbit Polyclonal antibody. Positive WB detected in human brain tissue, human kidney tissue. Observed molecular weight by Western-blot: 44kd

Preparation

This antibody was obtained by immunization of KRR1 recombinant protein (Accession Number: NM_007043). Purification method: Antigen affinity purified.

Formulation

PBS with 0.1% sodium azide and 50% glycerol pH 7.3.

Storage

Store at -20°C. DO NOT ALIQUOT

Clonality

Polyclonal

Ig Type

Rabbit IgG

Applications

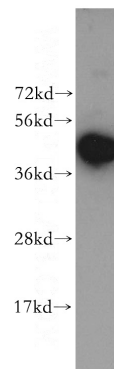
ELISA, WB

Dilutions

Recommended Dilution:

WB: 1:500-1:5000

Validations



human brain tissue were subjected to SDS PAGE followed by western blot with Catalog No:112124(KRR1 antibody) at dilution of 1:500