

KLRG1 antibody

Catalog Number: 112111

Product name

KLRG1 antibody

Specificity

human; other species not tested.

Antibody description

KLRG1 Rabbit Polyclonal antibody. Positive WB detected in human blood tissue, Raji cells. Positive IHC detected in human breast cancer. Observed molecular weight by Western-blot: 60 kDa

Preparation

This antibody was obtained by immunization of KLRG1 recombinant protein (Accession Number: NM_001329099). Purification method: Antigen affinity purified.

Formulation

PBS with 0.1% sodium azide and 50% glycerol pH 7.3.

Storage

Store at -20°C. DO NOT ALIQUOT

Clonality

Polyclonal

Ig Type

Rabbit IgG

Applications

ELISA, WB, IHC

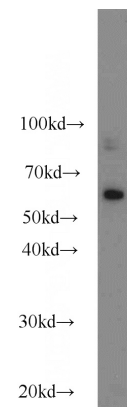
Dilutions

Recommended Dilution:

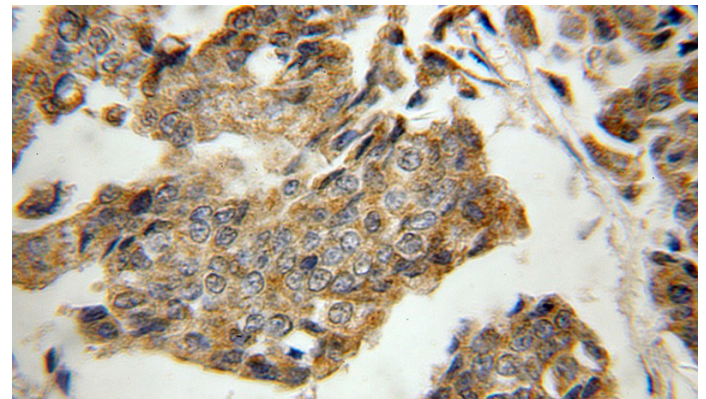
WB: 1:200-1:1000

IHC: 1:20-1:200

Validations



Human peripheral blood leukocyte were subjected to SDS PAGE followed by western blot with Catalog No:112111(KLRG1 antibody) at dilution of 1:200



Immunohistochemical of paraffin-embedded human breast cancer using Catalog No:112111(KLRG1 antibody) at dilution of 1:50 (under 40x lens)